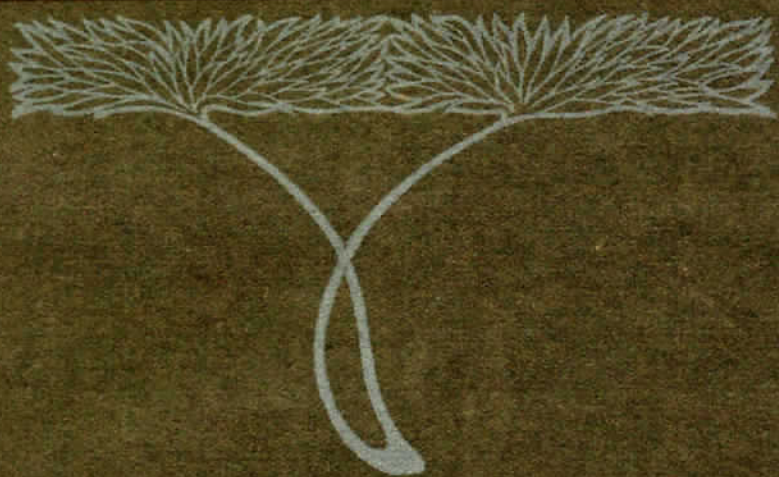


A. Listel

Briarcliff

Place of Schools



Briarcliff Manor New York

Nineteen Hundred and Six

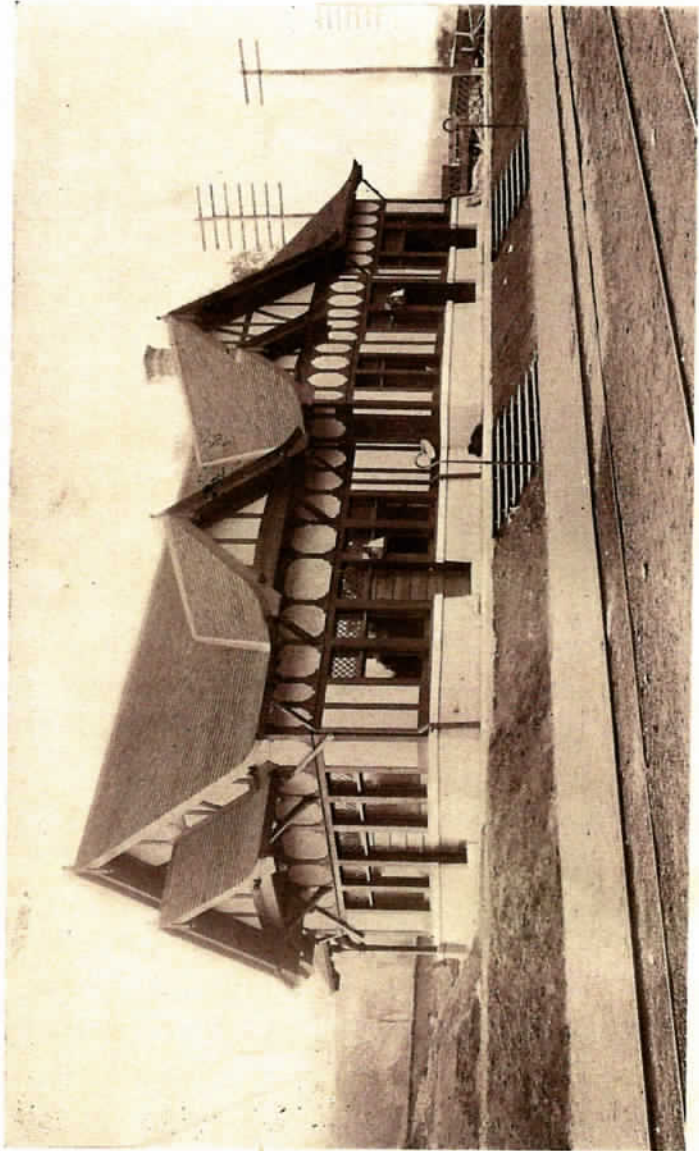
Briarcliff. Place of Schools

Foreword



THE first questions that arise in the minds of any who think of moving into the country are : What is the character of the proposed place? Are there suitable schools for the children? Is there a suitable church near by? Has it a good supply of water, and are the sanitary conditions safe for a healthy home, and how nearly are the comforts of the city to be obtained there, such as electric light, power, railway facilities, etc.? The answers to these questions are contained in the following paragraphs, and are commended to all who would be glad to escape from the busy confusion of the city to a healthy, educational, country life. All these conditions are amply fulfilled in Briarcliff Manor.

Leading
Questions



New Station, Briarcliff Manor

Briarcliff. Place of Schools

¶ The permanent character of Briarcliff Manor, both as an attractive place of residence and an educational center, is manifesting itself this autumn more fully than ever before. The development of this property has throughout the present tenure been along these lines, but the character of this development is now more fully manifest in its permanent shape. The visible results of long-continued policies are maturing.



¶ Briarcliff Lodge, which has hitherto been open during the Summer months only, has now started on a new policy of all-the-year-round operation. The patronage it has received hitherto has been much increased since this decision was made, and the entertaining responsibilities being in charge of Mr. D. B. Plumer who is so well known as the former manager of the Laurel House and Laurel-in-the-Pines at Lakewood, is an ample guaranty for the high character of Briarcliff Lodge hospitality.

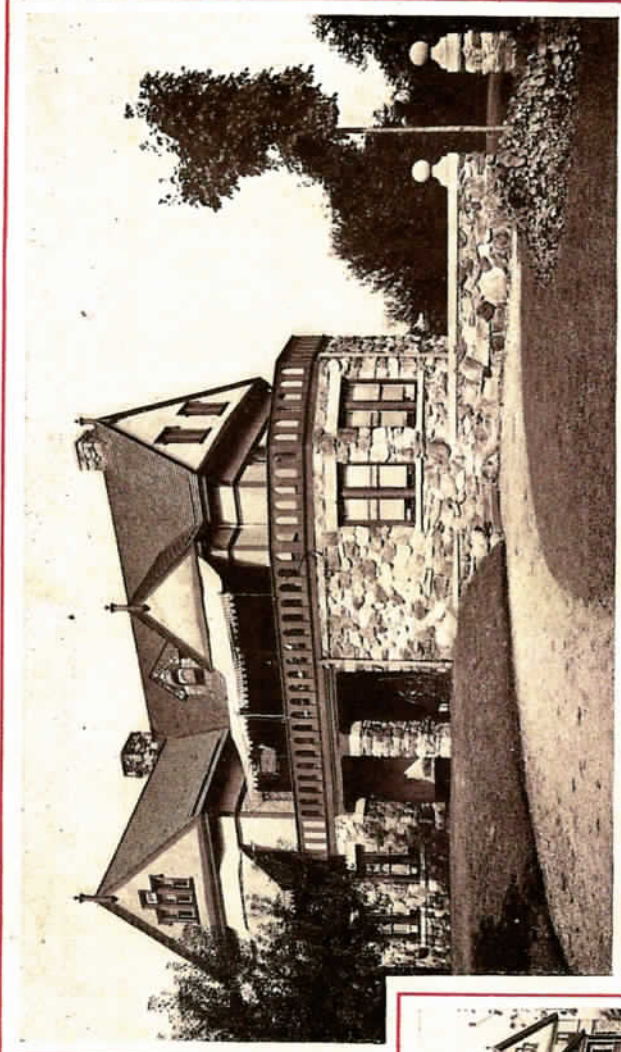


¶ The scenic attractions of Westchester County are permanent, and the improvements in the local conditions in Briarcliff Manor, including its varied enterprises, the constant opening up and building of new roads fully macadamed and drained, and the setting out of trees with their accessories, shrubs and

Permanence

An All-Year
Resort

Beauty
with
Safety



TEWKSBURY SCHOOL-BRIARCLIFF MANOR, N.Y.



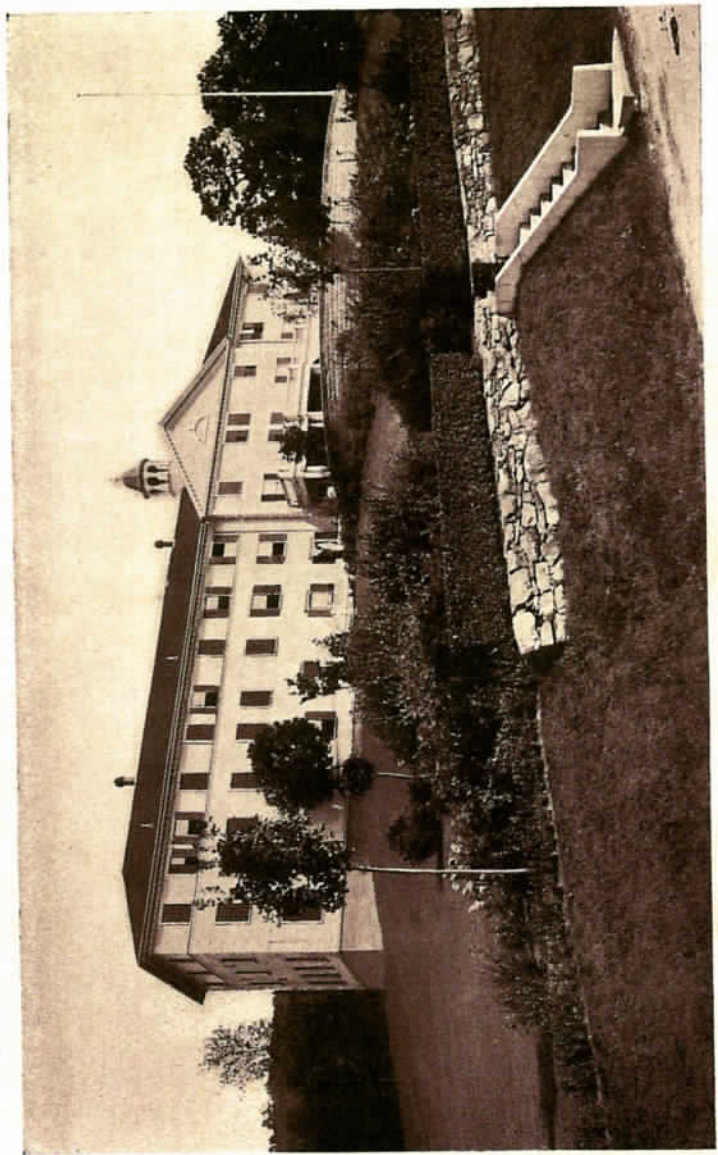
Briarcliff. Place of Schools

flowers, gives the whole property a more park-like appearance than it has ever before assumed. The views from the high ground, stretching across the Westchester Hills to the east and the Hudson River to the west, give a charm and variety to the prospect that is unsurpassed and rarely equalled. To enhance such beauty an amount of money has been spent for the drainage and water-service equipment of the property, that testifies to the thoroughness with which the work hereabouts is undertaken. Add to this the continued high standard of the Briarcliff milk and other products, and aggregate merit renders this locality without any superior as a healthful, beautiful place for family homes.



¶ Besides all these, the moral features and atmosphere of the place are of the highest order. The Congregational Church, which might also be called the Parish Church, seating over four hundred people, holds services which will hold their own in comparison with the services in the leading churches in New York, and is ably presided over by its pastor, the Rev. Alexander MacColl. The philanthropic activities connected with this church are numerous and efficient. There is also the All Saints Episcopal Church, Rev. Thomas R. Hazzard, rector, which provides an excellent service for those of that denomination. The educational facilities of the place are

Churches



Miss Knox's School, Briarcliff Manor

Briarcliff. Place of Schools

even more strongly marked, there being now established here, two private schools for young ladies, a school for boys, and one private school for children, besides the district school.



¶ Mrs. Dow's School, which is situated on high ground overlooking the beautiful Pocantico Valley to the east, has a location for healthfulness that is unsurpassed. This school has a very large attendance, opening this autumn for the second year of its occupancy of the new building, photographs of which are shown herewith. It is already well known that this school is under the charge of Mrs. Mary E. Dow, who was formerly associated with Miss Porter in the school at Farmington, made famous by her name, so that the standard of its education is too well known to need any commendation here; and the building so recently constructed has been put up with a special view to the high requirements of such a place of education. Its sanitary equipment and all its accessories are possibly not equalled by any other school building of its class in the country.

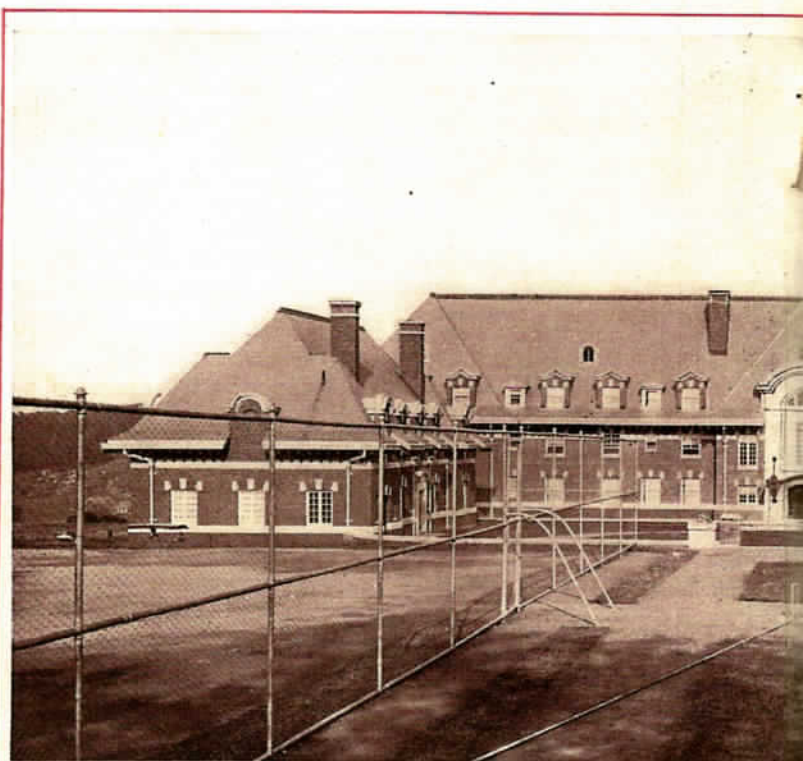


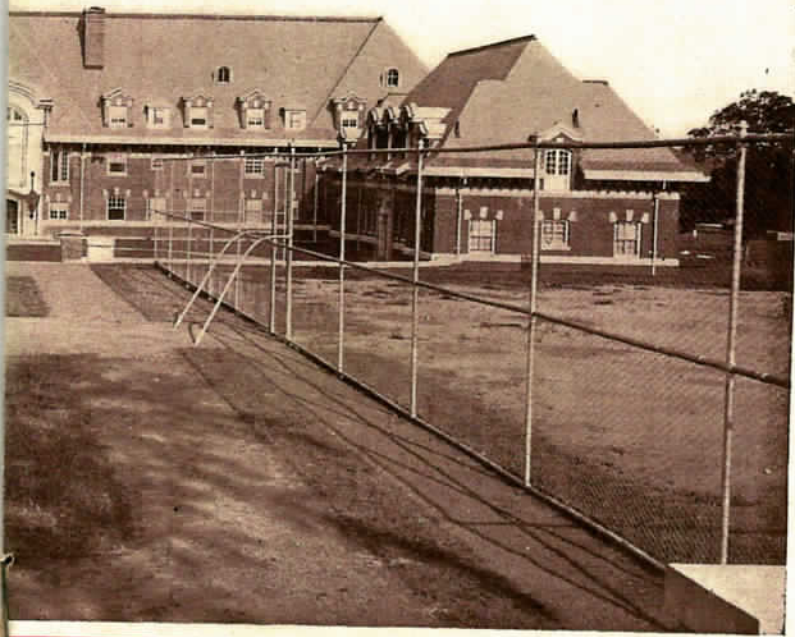
¶ Next in order is Miss Knox's School, located across the Pocantico Valley, also situated on high ground, and occupying a build-

Mrs. Dow's
School

Miss Knox's
School

MRS. DOW'S SCHOOL





BRIARCLIFF MANOR, N.Y.



Public School, Briarcliff Manor



Briarcliff Congregational Church

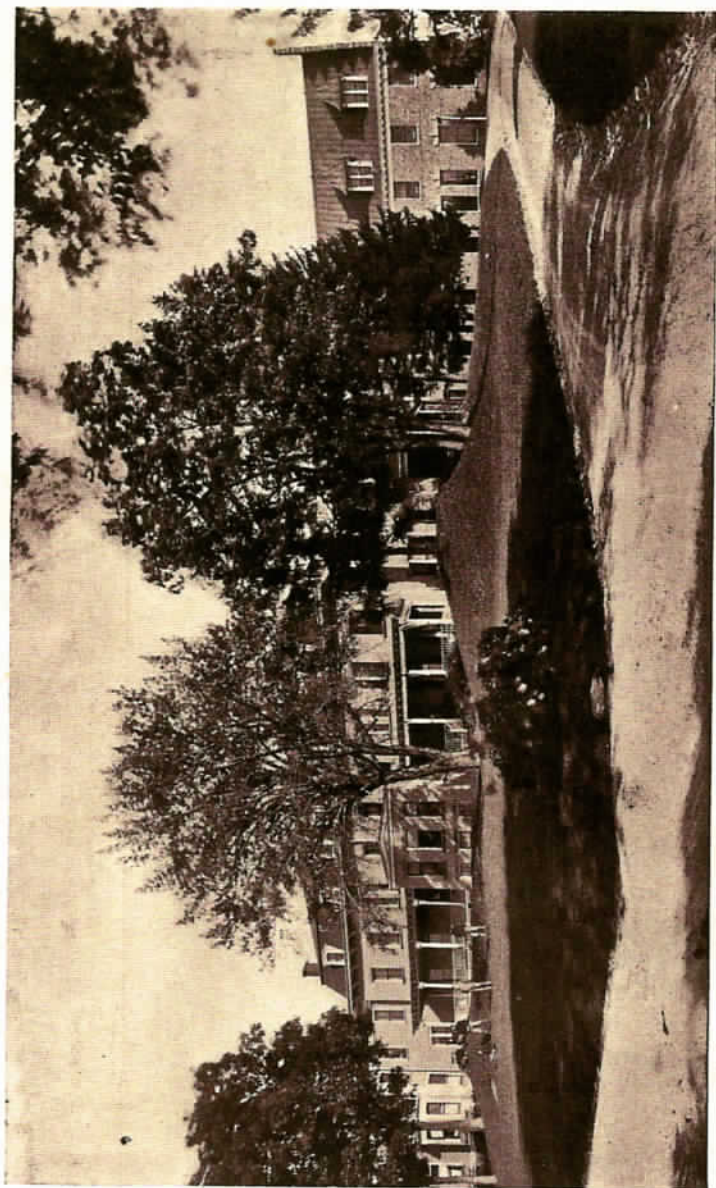
Briarcliff. Place of Schools

ing perfect in its appointments which cannot fail to be attractive. The high rank of Miss Knox as an educator has long been recognized, and now that she is established in her new school building and supported by an able faculty, there is every reason to believe that her future will result in the success she so well merits. The building formerly known as Pocantico Lodge has been refitted and considerably increased in size with a view to adapting it to the purposes of a high-class school. A large gymnasium has been constructed and all other accessories suitable for the study and relaxation of the scholars, have been provided.



¶ The recent extension of the boundaries of the Village of Briarcliff Manor brings the Dr. Holbrook's School for boys within its limits, thus adding to it a conspicuous advantage for boys' education. Dr. Holbrook's School, founded many years ago, and so thoroughly conducted by the sons of its founder, has established itself so fully in public confidence that it needs no further endorsement here. A high standard has always been maintained there, and we believe that all who have enjoyed its educational facilities are unanimous in their endorsement of it. The location of the school, overlooking the Hudson, could hardly be surpassed in beauty.

Holbrook's
School



Holbrook School, Briarcliff Manor

Briarcliff. Place of Schools

¶ The Misses Tewksbury's private school for boys and girls under the age of fifteen years now occupies two handsome houses situated within easy access of both station and church, and has already proved itself to be worthy of a very successful career.

Tewksbury
School



¶ Besides these, Briarcliff Manor feels proud of its District School. The building and its equipment, modern in every particular, have been recently enlarged to accommodate an increasing number of scholars, and the Principal, Mr. Edgar L. Andrews, who has lately succeeded to the duty, bears a very good name for efficiency in the discharge of his responsibility.

The Public
School



¶ It must not be overlooked that the New York Central Railroad Company has just completed a beautiful and commodious passenger station to take the place of the former one which had been outgrown by the increasing demands of the place. The train service on the Putnam Division, too, is gradually being improved. The officers of the railroad company are in full sympathy with the development of this suburban locality and are always ready to do their utmost to facilitate communication, and it is safe to say that when

Railway
Facilities



"The Ancients" Club, Briarcliff Manor



"The Elms." Briarcliff Manor

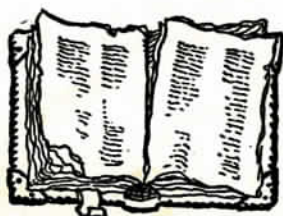
Briarcliff. Place of Schools

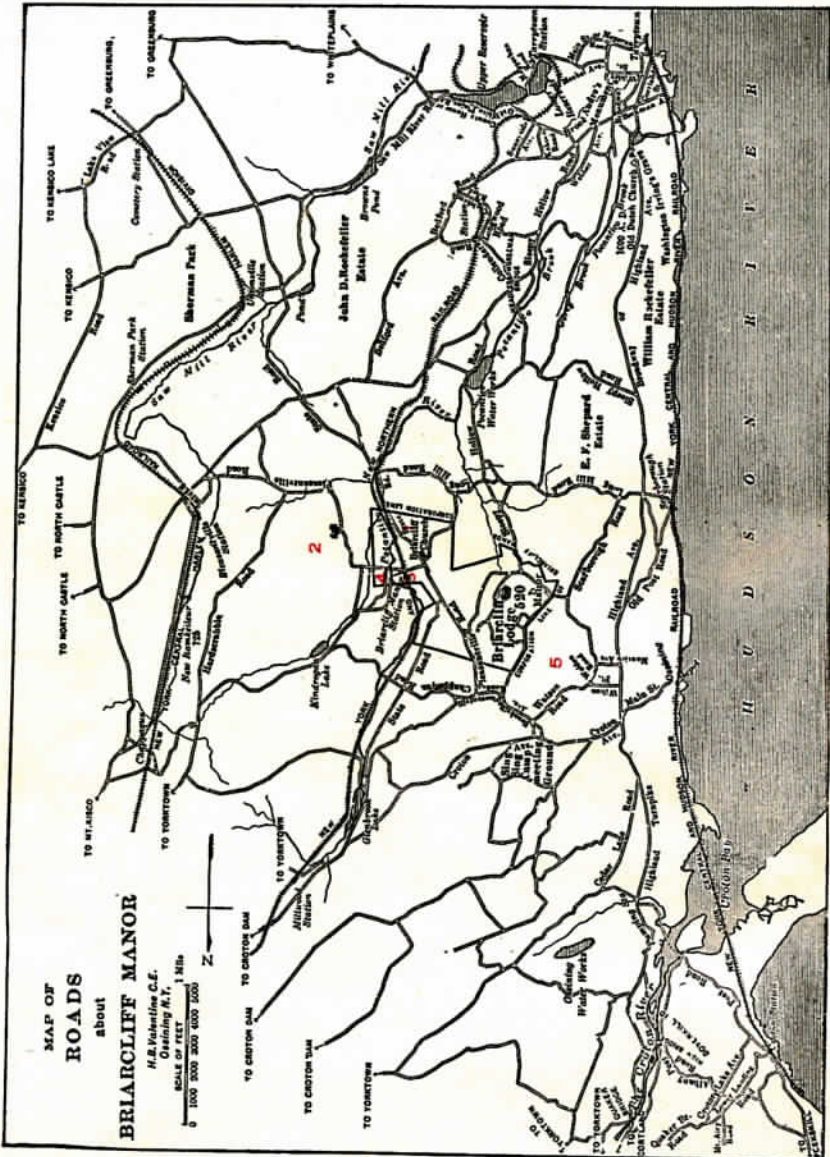
electrical equipment is fully installed rapid and more frequent communication with the city will be put in operation.



¶ A charter has been granted for the construction of a trolley road to run through this place which will tend to facilitate communication with the adjacent stations at Pleasantville and Ossining. A steam fire engine is always kept in readiness in case of need for the protection of property in the village, as it has always been the aim of Briarcliff Manor to afford the same protection in the enjoyment of the country as is obtained in the city. This is also carried out in the establishment of a complete electrical service for both light and power.

In General





1—DOW SCHOOL 2—KNOX SCHOOL 3—TEWKSBURY SCHOOL 4—PUBLIC SCHOOL 5—HOLBROOK SCHOOL

