

# *Briarcliff Manor/Scarborough Then and Now*

**An Historic Coloring Book**



**A Post-Centennial Presentation from the  
Briarcliff Manor/Scarborough Historical Society ©2005**

# Briarcliff Manor/Scarborough: *Then and Now*

At the Village Centennial Celebration in 2002, several residents mentioned it would be helpful for all of us to have a broader look at our home town's first hundred years than what was supplied by the Variety Show Program. The Briarcliff Manor/Scarborough Historical Society has answered that call by producing this 36-page coloring book and history lesson. It focuses on the most important and interesting buildings and sights in the village going back even before its incorporation. And although the coloring itself may be directed toward the children, the history should appeal to the entire family.

Unfortunately, several of the most beloved homes, public and corporate structures are now gone. With the help of vintage photographs and the hard work of Briarcliff's own high school-age art students, however, they are recreated here in black and white. Each is accompanied by a caption which explains the prominence and value of the subject at hand.

In addition, the Society felt a short history of the village and its founder's role might also help set the stage properly for what is to follow. And though our history inevitably focuses on Mr. Law, we also salute all those elected and appointed officials and just plain citizens who have labored mightily and with purpose over the years to make this a better and more meaningful place to live and work.

In the beginning, in 1890, Walter W. Law purchased 232 acres of farmlands left over from Native American settlements in an area that would become a burgeoning and industrious village by the turn of the century. During that decade, he made more than 40 purchases of land totaling some 5,000 acres and built Briarcliff Farms.

His enterprises and accomplishments were legion. In addition to award-winning milk, cream and butter shipped daily to New York City by rail and Europe by ship, his American Beauty Roses were world famous and his Briarcliff Table Water Company shipped pure spring water all over the state. The same year Briarcliff Manor was incorporated, in 1902, Mr. Law opened The Briarcliff Lodge. This was the east's most notable social hostelry in the early 20th Century.

Mr. Law was also responsible for the Briarcliff Congregational Church, Liberty (now Law) Park, the local railroad station (now our library) and many, many homes for his workers. Space limitations don't allow us a full listing of his achievements which still influence the quality of our lives today. Certainly many important things have happened locally since he passed on in 1924. If you look closely, however, the impact of Walter Law's zeal, humanity and care for others is very much evident in almost every major aspect of our village today.

Enjoy coloring in- and reading about- our wonderful home town!

*The Briarcliff Manor / Scarborough Historical Society*

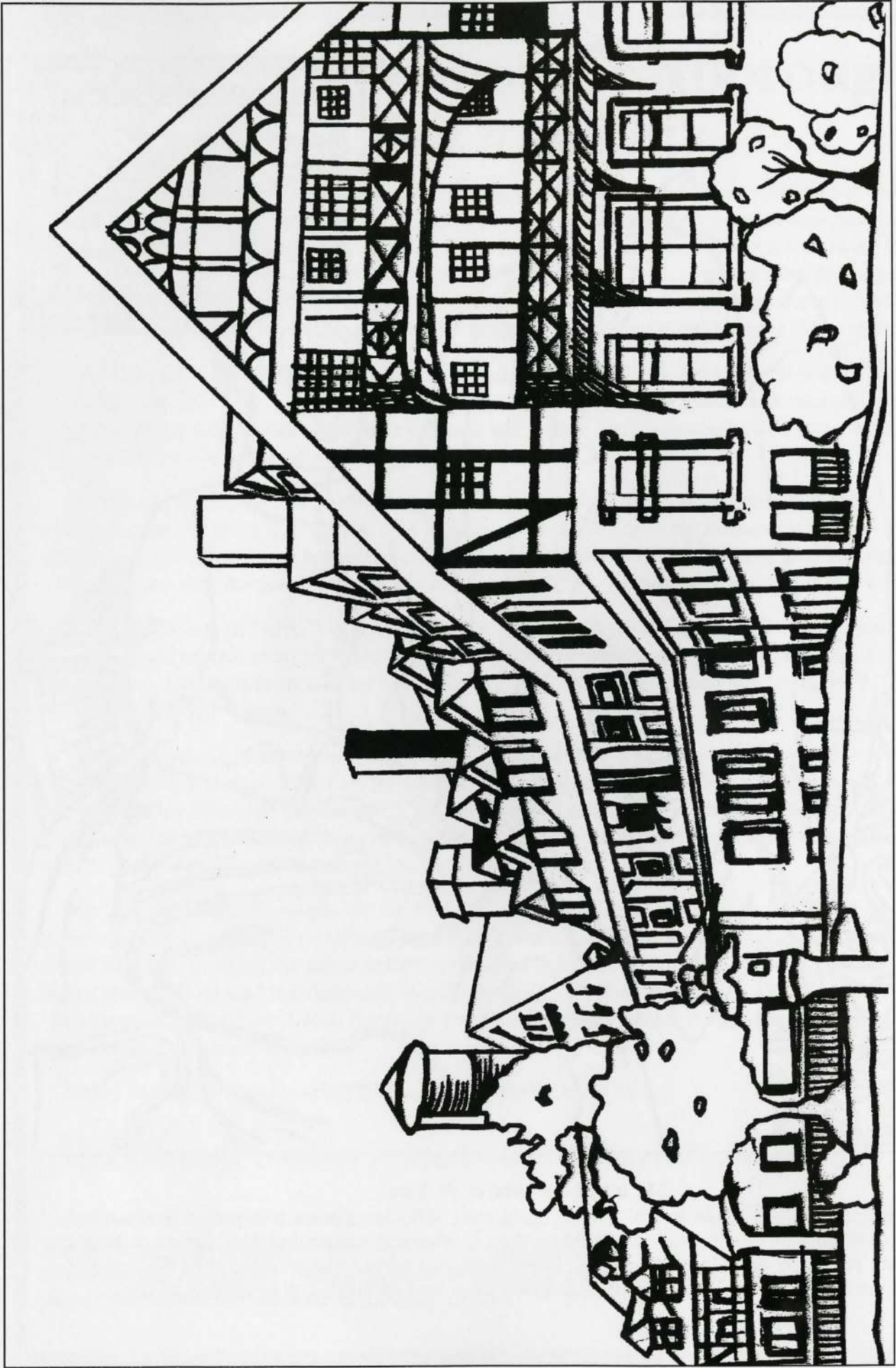
---

**Cover:** Park lands donated in 1917 by Mr. Law became the site of one of Westchester's first public swimming pools in 1927- its name was changed from Liberty Park to Law Park in the early 1950s.



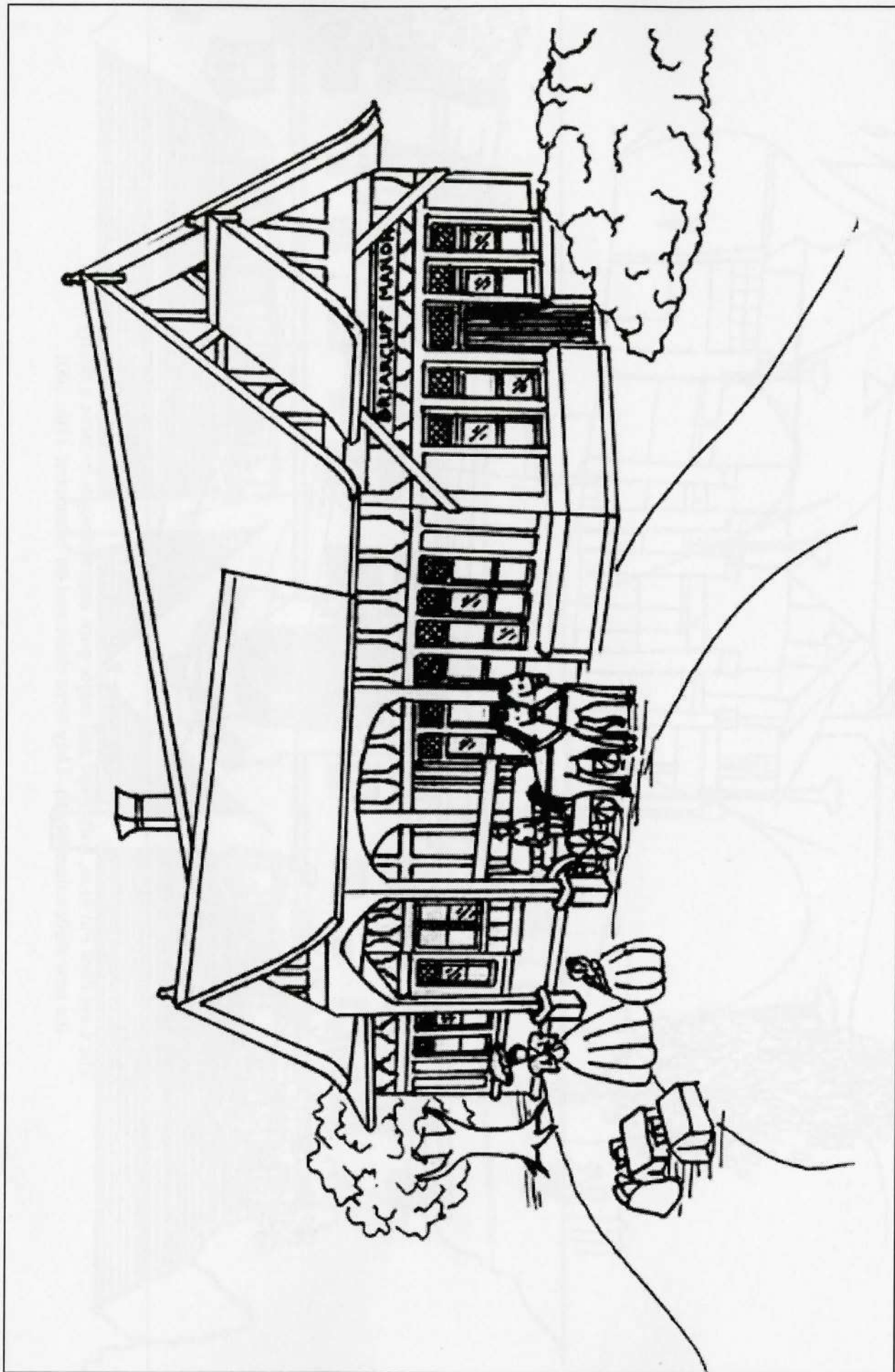
**Mr. and Mrs. Walter W. Law**

Before founding Briarcliff Manor, Walter Law— here with wife Georgianna at home on Scarborough Road— was credited with single-handedly building the US wholesale carpet industry. Living in Yonkers and working for the W & J Sloane Company, health problems forced him to retire at 61 for rest and relaxation. He moved to 232 acres of abandoned farm land up north and never looked back.



**Briarcliff Lodge**

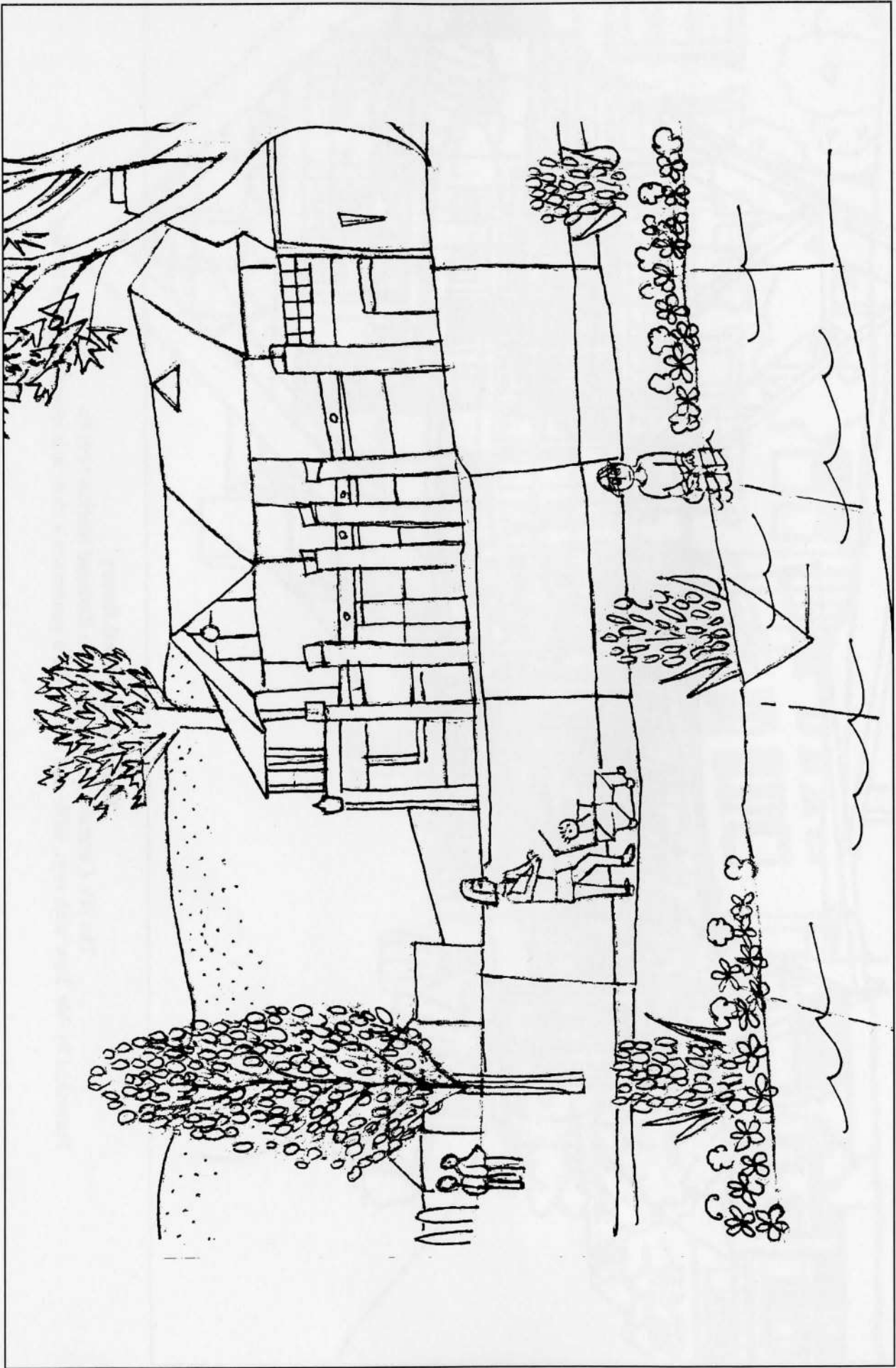
Briarcliff Lodge (1902): a favorite of Mary Pickford and Tallulah Bankhead, as well as Franklin and Eleanor Roosevelt, it featured 15 tennis courts, indoor & outdoor pools, croquet, a golf course, riding stables and gourmet dining.



**Railroad Station/Library**

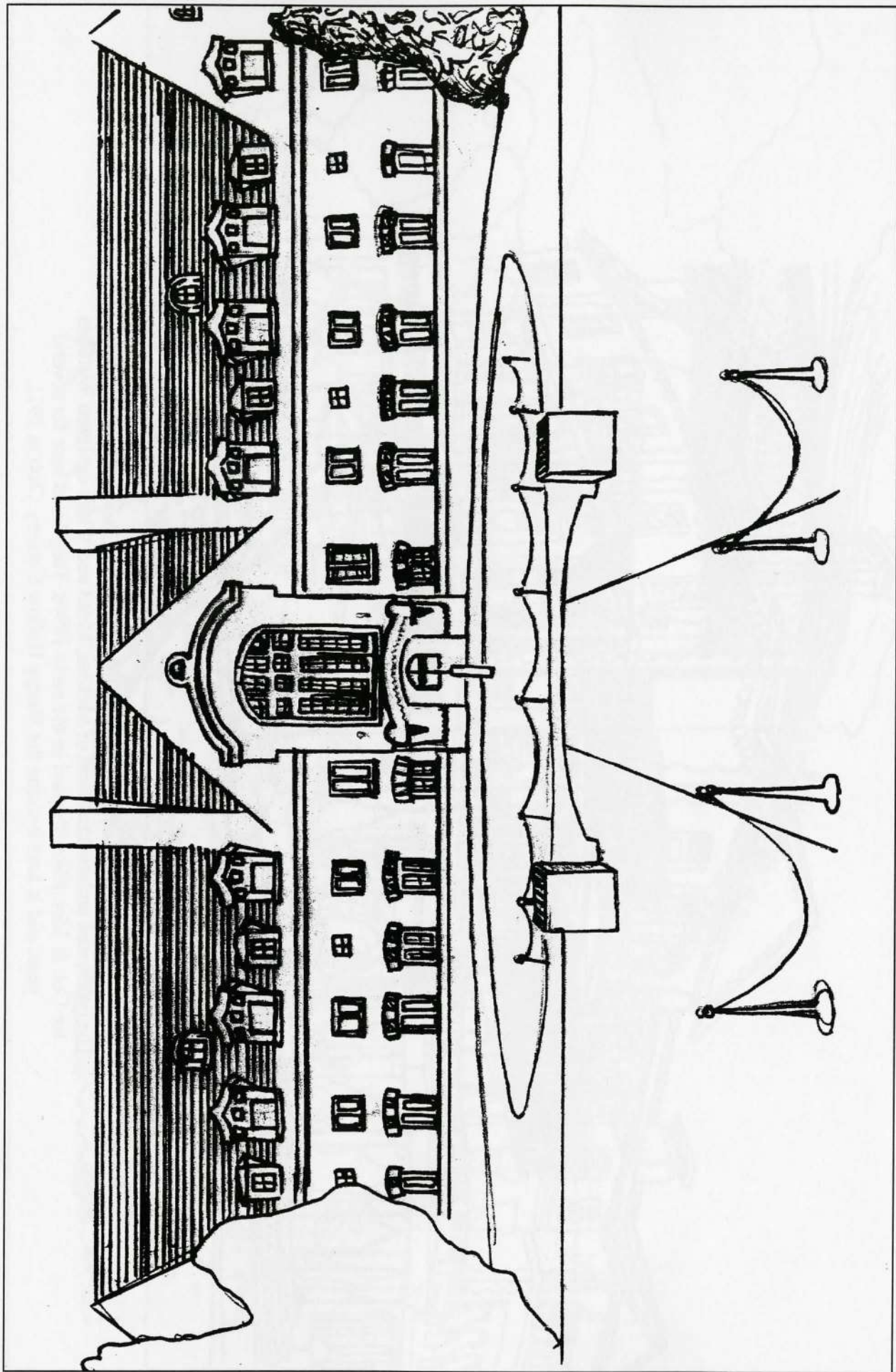
The NY Central's Putnam Division Railroad Station (1914).

Furnished by Mr. Law with rugs, table and chairs like a gentlemen's club, it is now the village library.

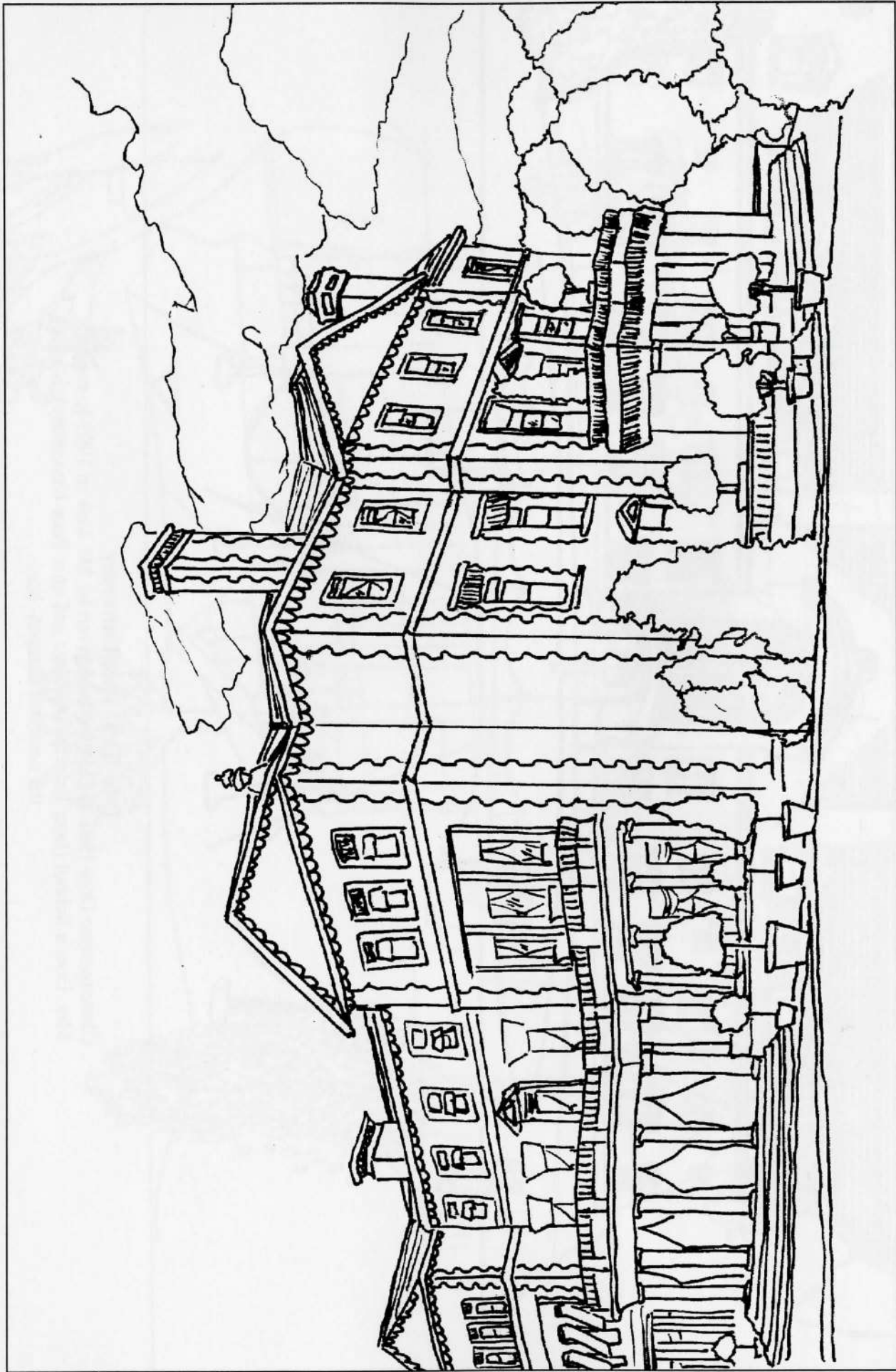


### Law Park Pavilion

The Law Park Pavilion, bathhouse and major park improvements became a reality as the new millennium began. They were dedicated on November 11th, 2001.



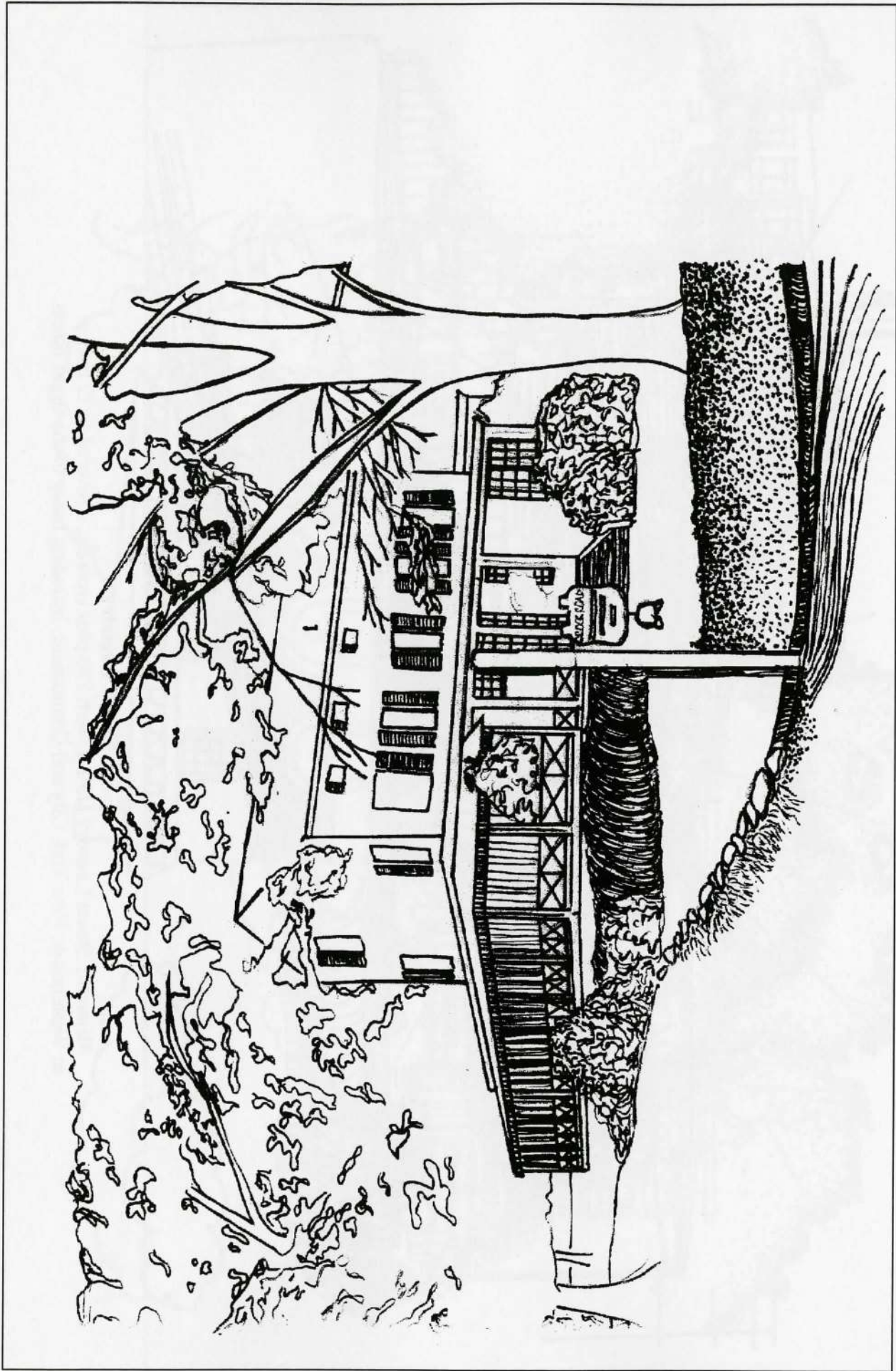
**Dow Hall - Pace University**  
Chateausque Dow Hall (1915), on land given by Mr. Law in 1903 to expand Mrs. Dow's School (later Briarcliff College and now Pace University), is still the center of campus life.



**Woodlea/Sleepy Hollow Country Club**

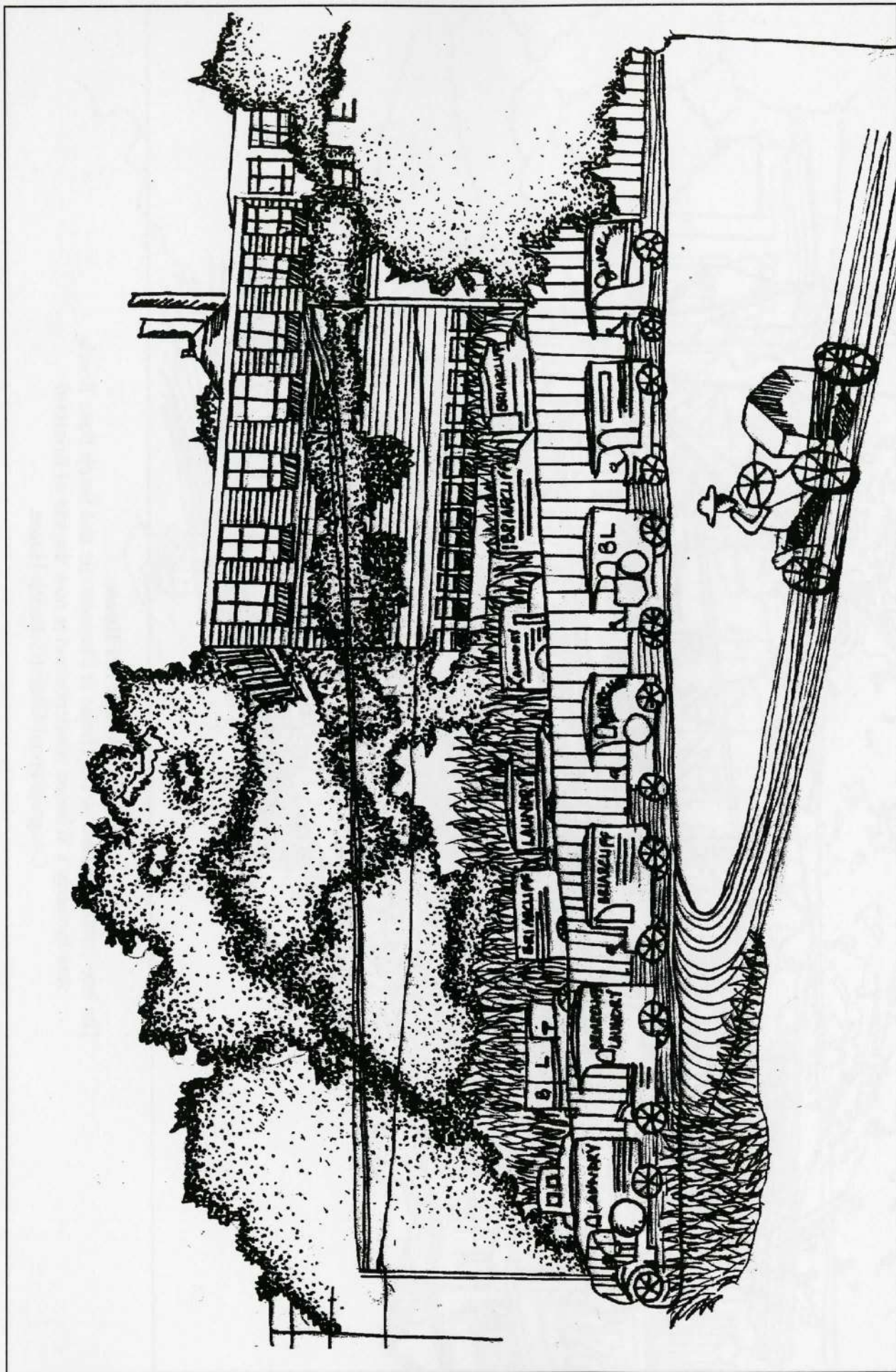
The celebrated architectural firm of McKim, Mead and White designed Woodlea for Col. & Mrs. Eliot Shepard in the early 1890s. They lived here for several years and it later became the Sleepy Hollow Country Club in 1911.





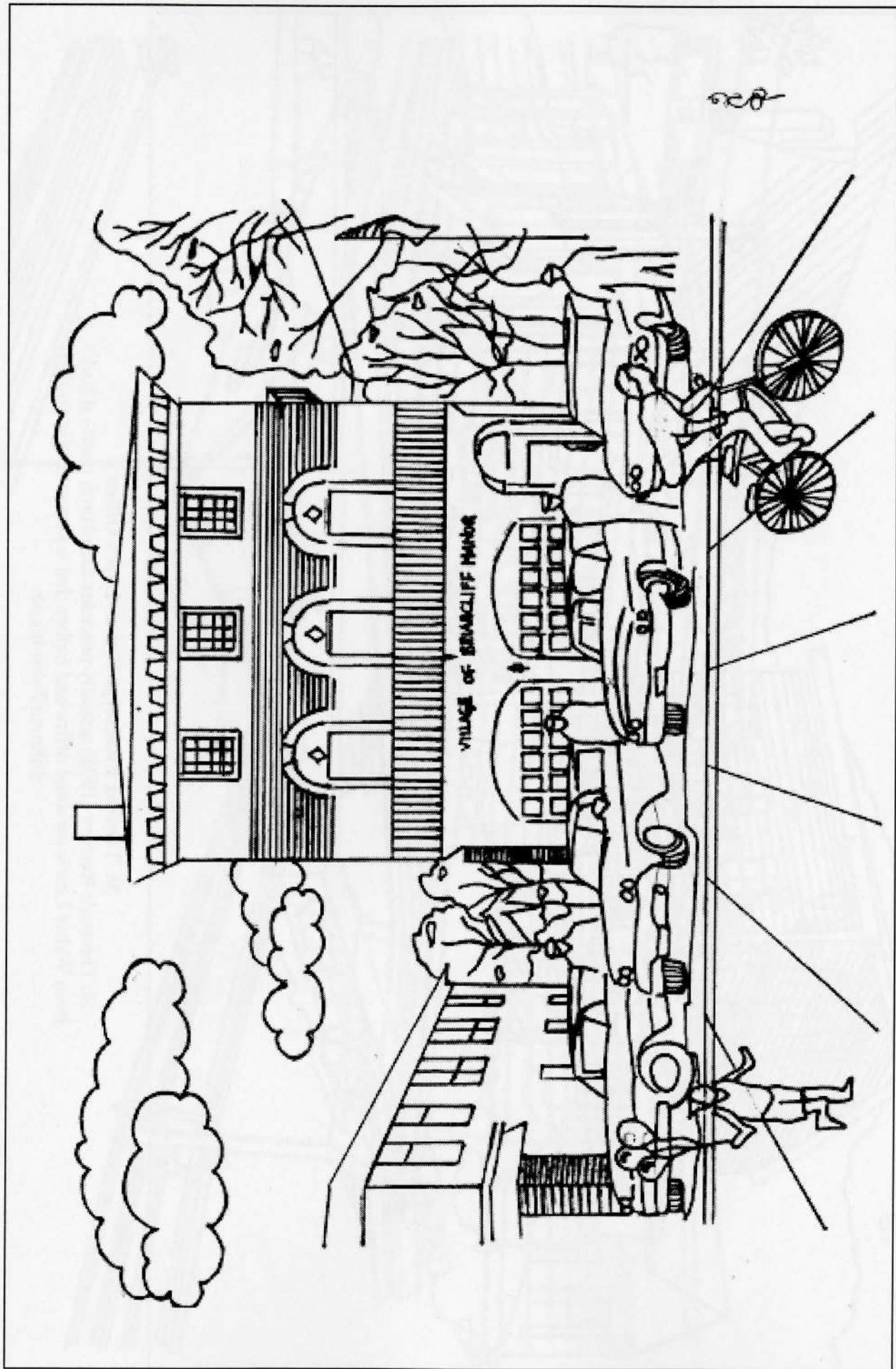
**Crossways Tea House**

The late-1800s Crossways Tea House at Pleasantville and South State Roads, was formerly a Whitson residence and is now the site of Briarcliff Congregational Church's Parish House.



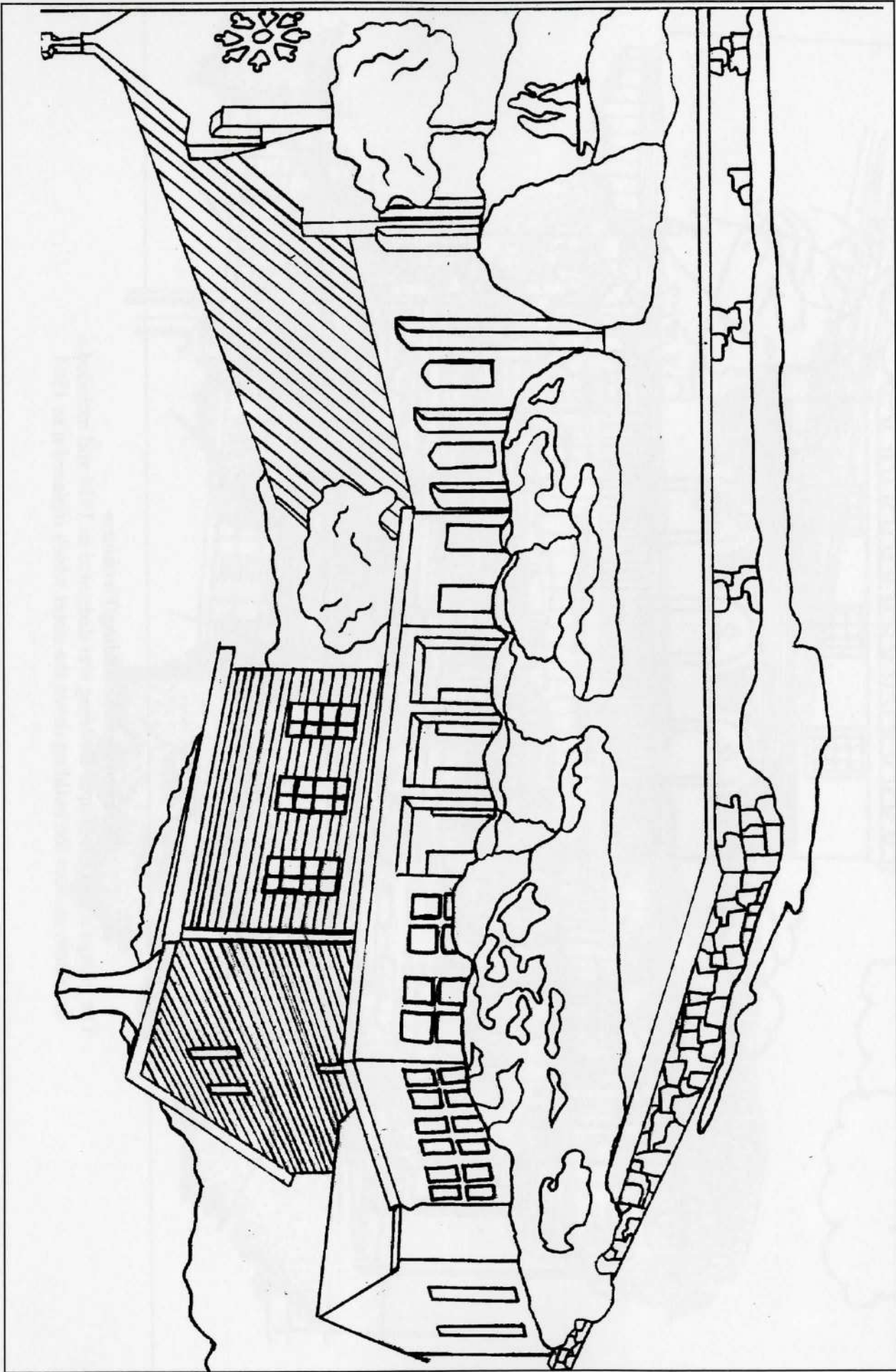
**Briarcliff Laundry**

Briarcliff Steam Laundry (1909), with 100-plus workers, delivered to 12 routes in Westchester, New York City and Connecticut, including many of the finest hotels.



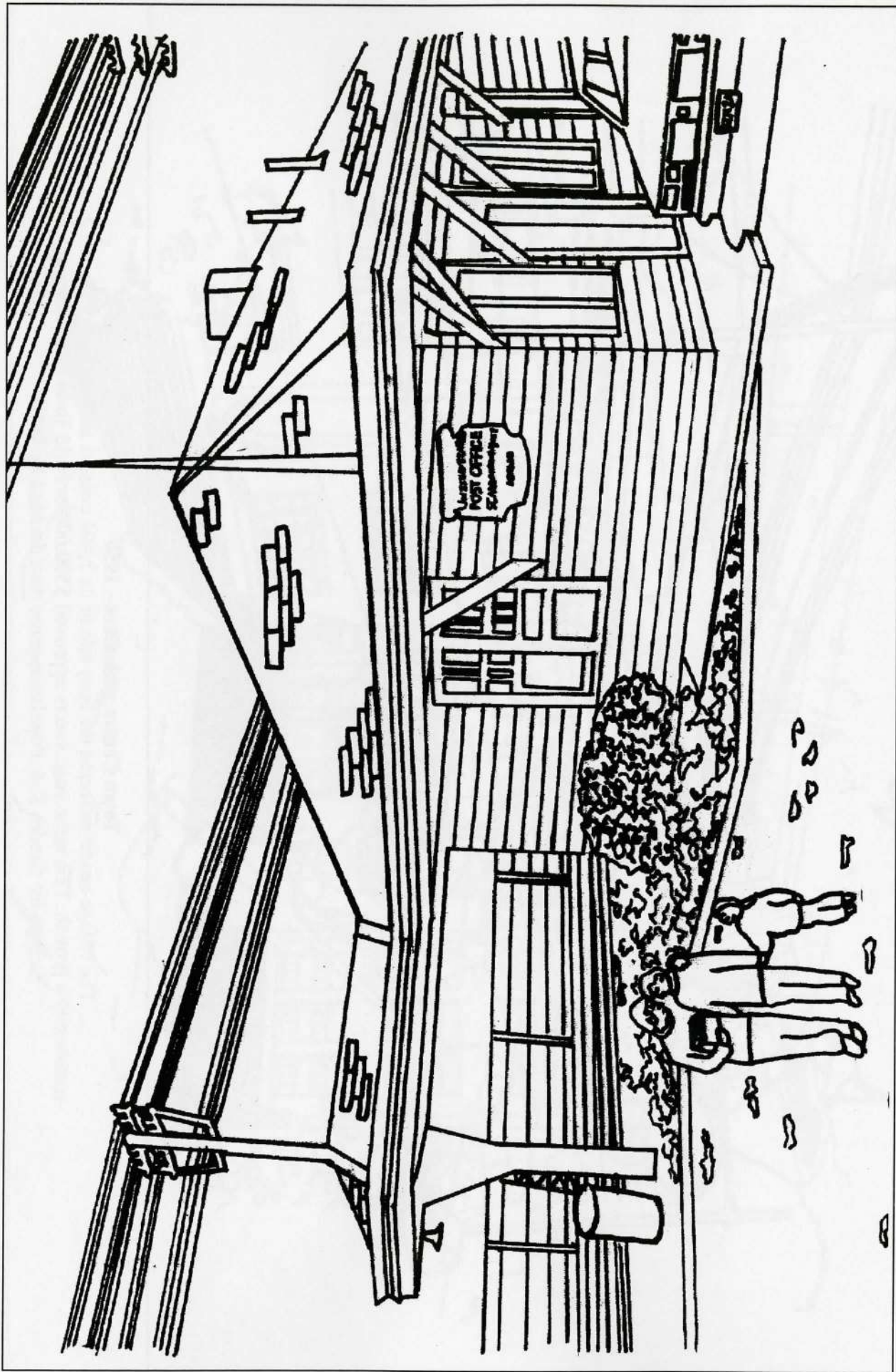
### Old Municipal Building/Firehouse

The village's first Municipal Building was dedicated in 1914 and included a firehouse, as does the building down the street which replaced it in 1964.



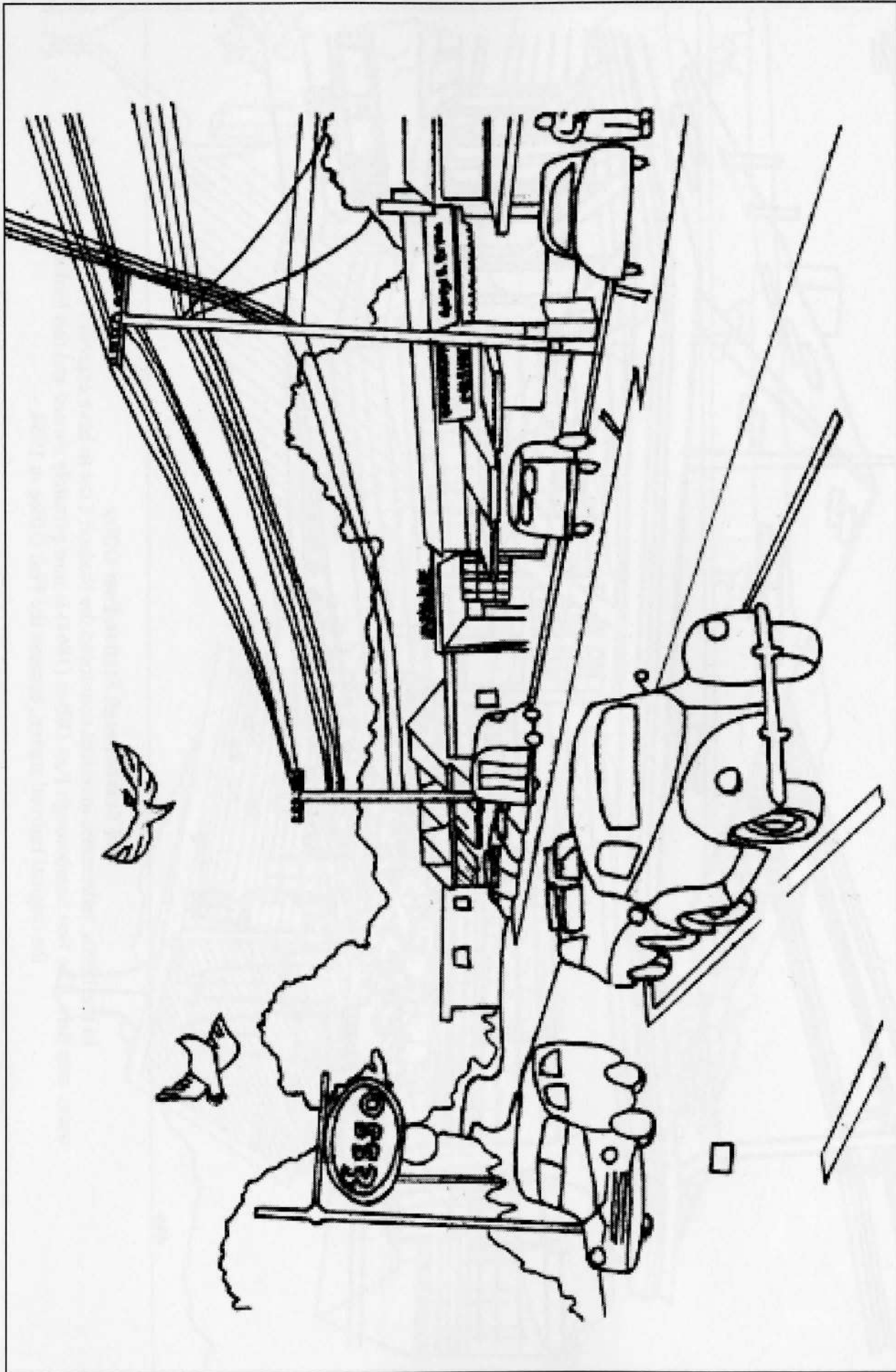
**St. Theresa's Rectory/ Walter Law's Office**

St. Theresa's Rectory (1928) actually precedes the church itself— it had been Walter Law's personal office and before that was part of the original Stillman Farm house.



### Old Scarborough Station/Post Office

In the 1890s, millionaire investors convinced the Hudson Line to have express trains stop here. The first Scarborough Post Office (1864) is now privately owned and this building, the original railroad station, became the Post Office in 1964.



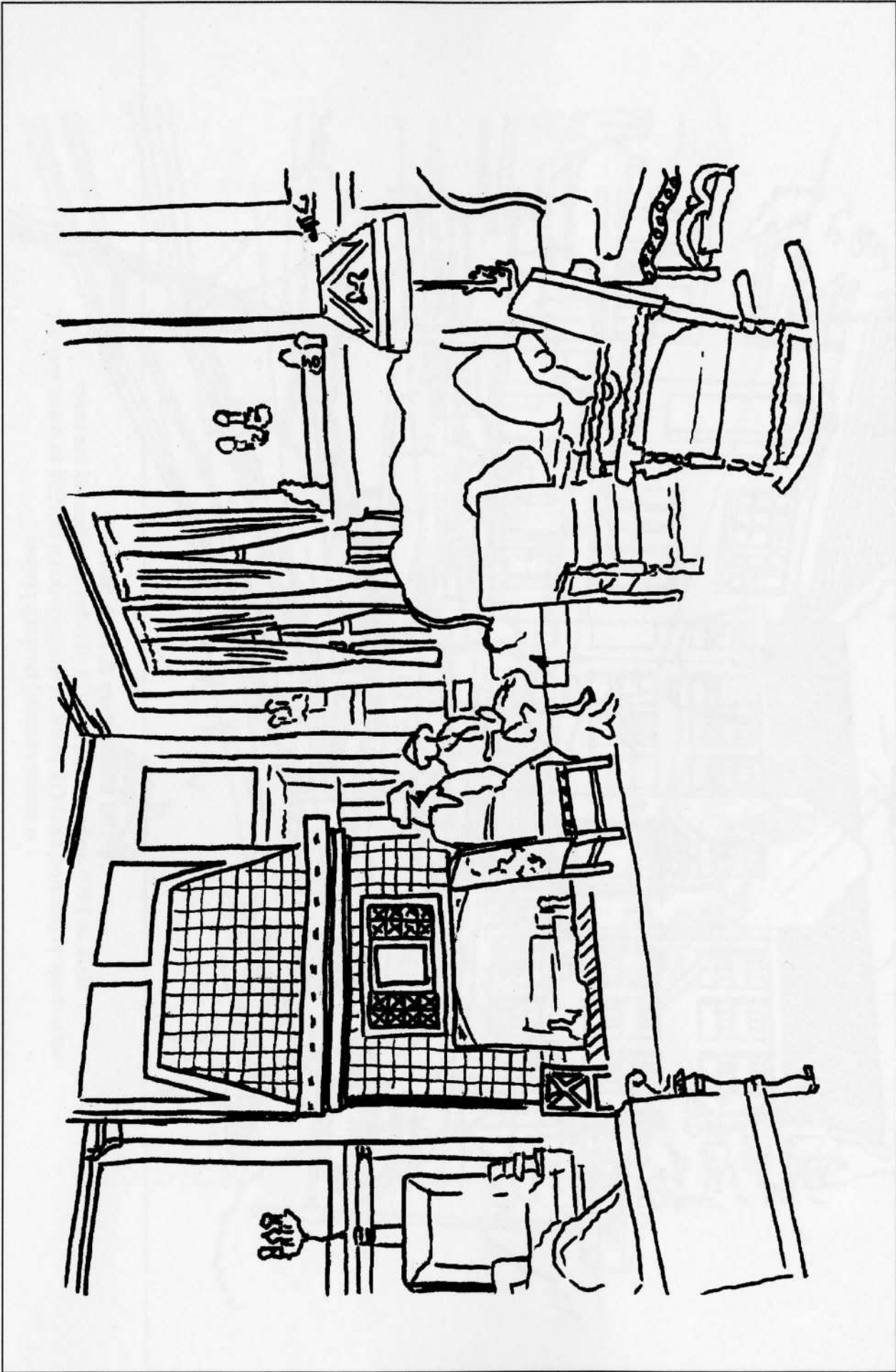
### Town Center with Cars - 1950

The village center reflected the busy life of its 2,494 citizens and the community's growth. This same year, voters approved \$500,000 to build Todd Elementary School for Grades K-6. Population more than doubled by 1960.



**Old Elementary & High School**

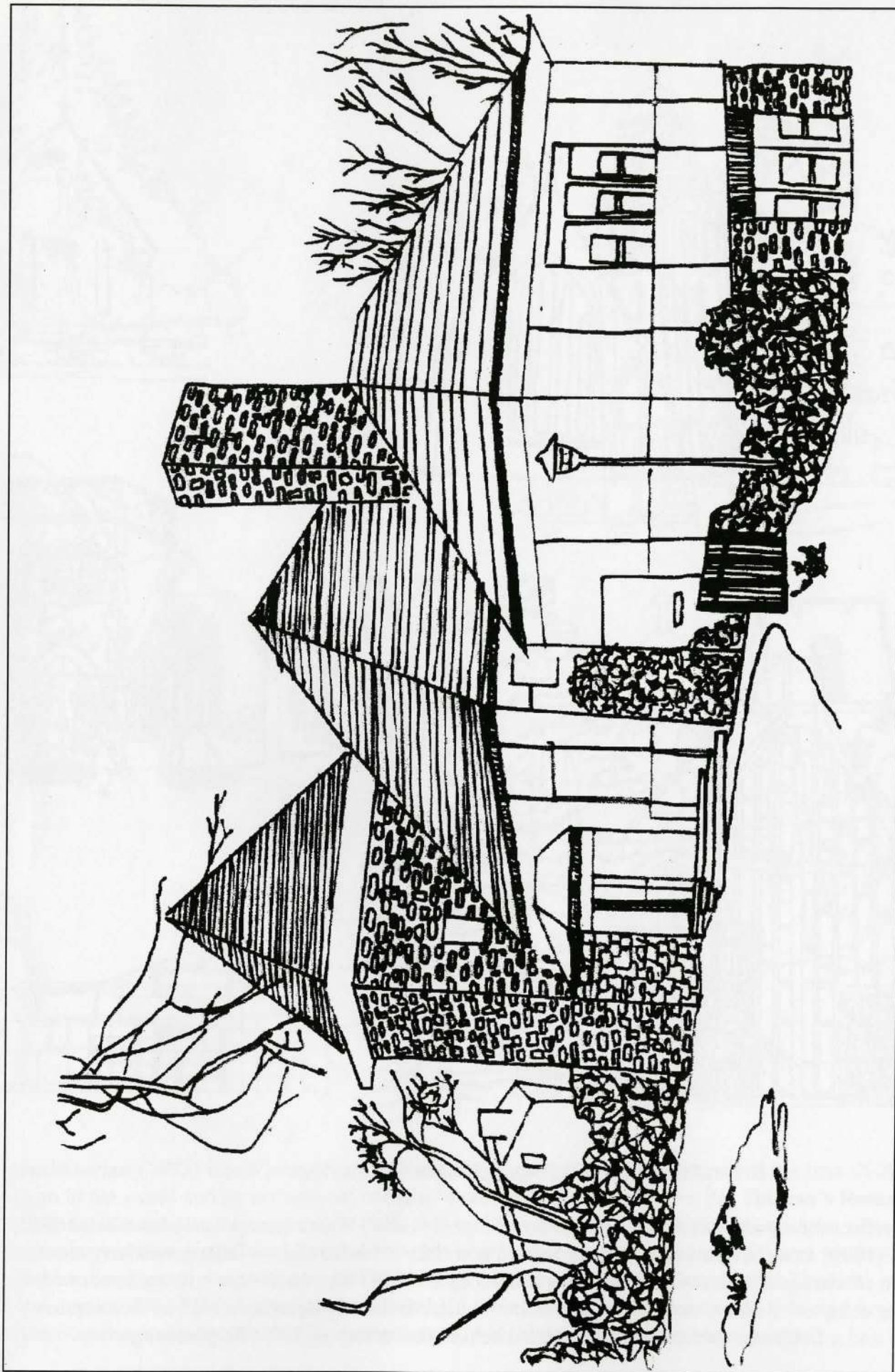
Built in 1909 and enlarged in 1928, this building housed the entire school-age population until the 1930s. It was torn down in 1996 to make way for a senior citizens' housing project.



**Briarcliff Lodge Great Hall**

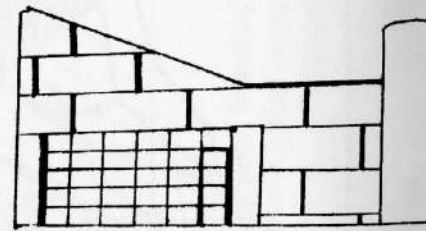
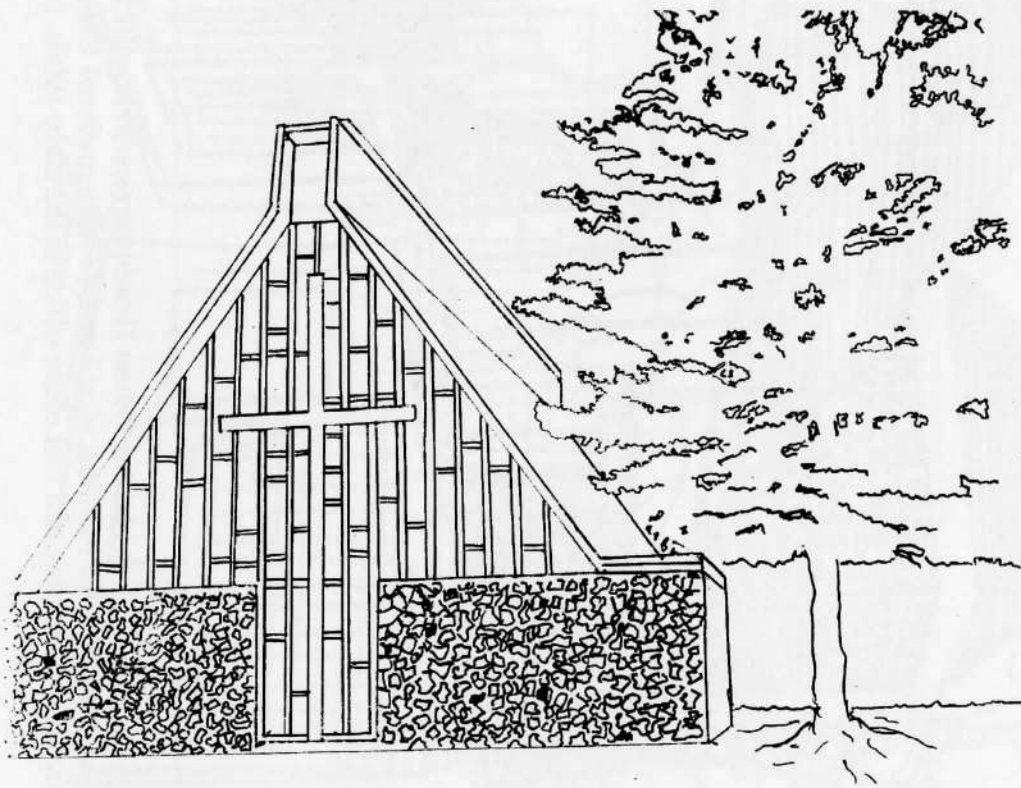
The lobby of "the hotel beautiful" contained a chiming stairway clock, a large fieldstone fireplace and a tiled fireplace plus an Aeolian organ. The hall's furnishings—period furniture, medieval armor and weapons -- "expressed the general tone of the lodge better than any other room."





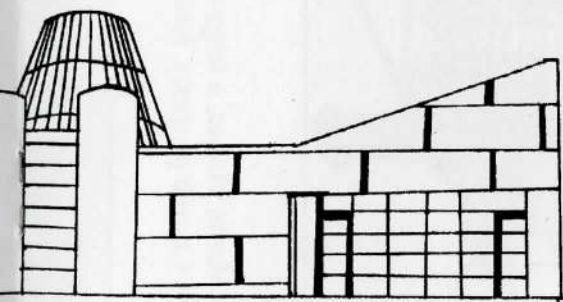
**Labor Union Headquarters/Briarcliff Realty Offices**

This Pleasantville Road building, now Local 137 International Union of Operating Engineers, was originally the Briarcliff Farms Dairy building and real estate office in the early 1900s. It also and served as the village library in the 1930s.

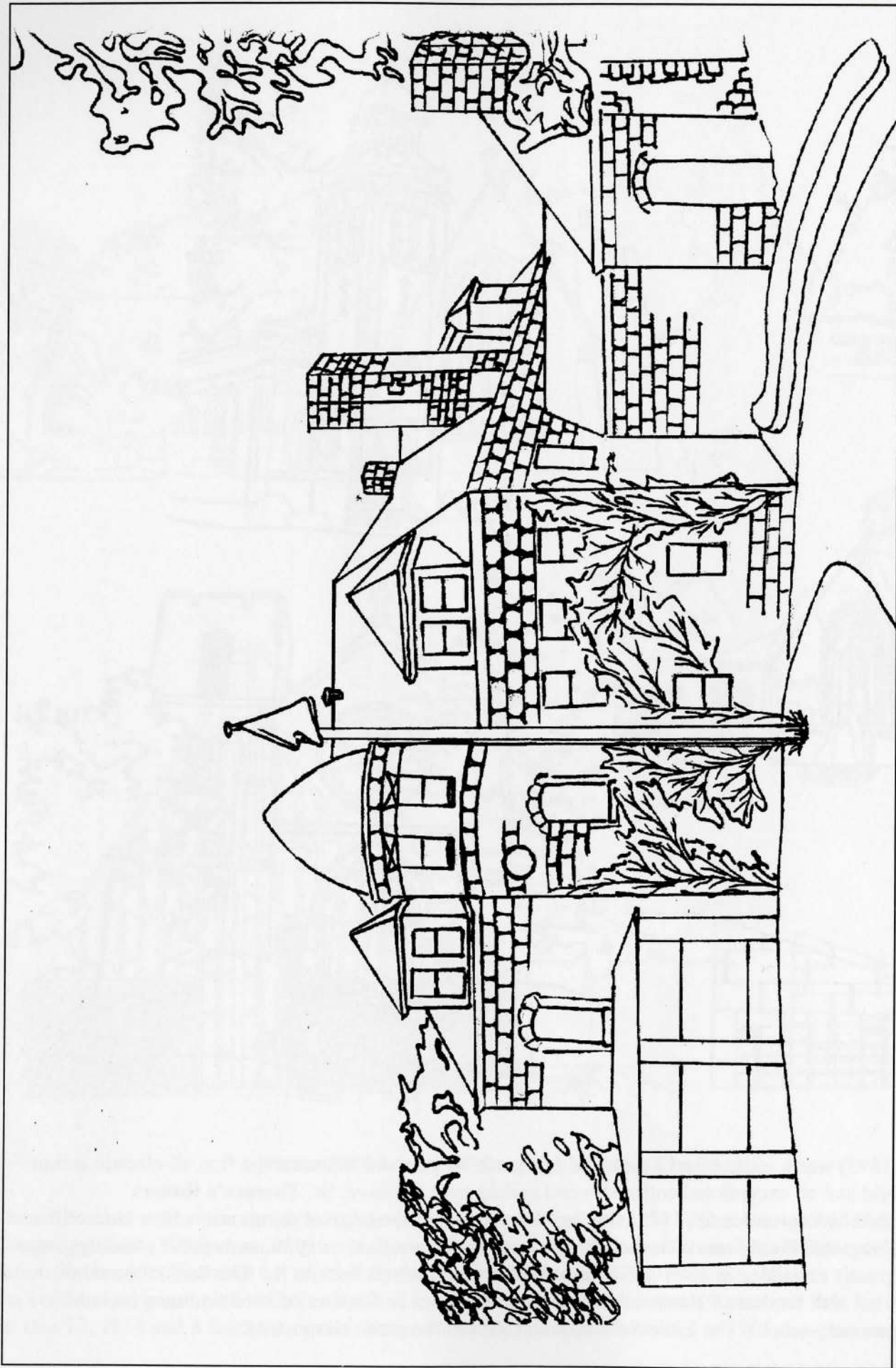


### Briarcliff Manor/Scarborough's Seven Churches

These churches reflect the variety of religious life in the village: (*Center*) Walter Law provided the **Briarcliff Congregational** (1896) as an outgrowth of Sunday School in a little schoolhouse; its Tiffany windows are nationally-known (*From top left clockwise*) **St. Mary's Episcopal** (1839) was the village's first church, with the 1883 building complete with ivy donated by Sir Walter Scott; **All Saint's Episcopal** held its first service on Dec 13, 1854 and a fieldstone parish house was added behind the rectory in 1905; **Scarborough**

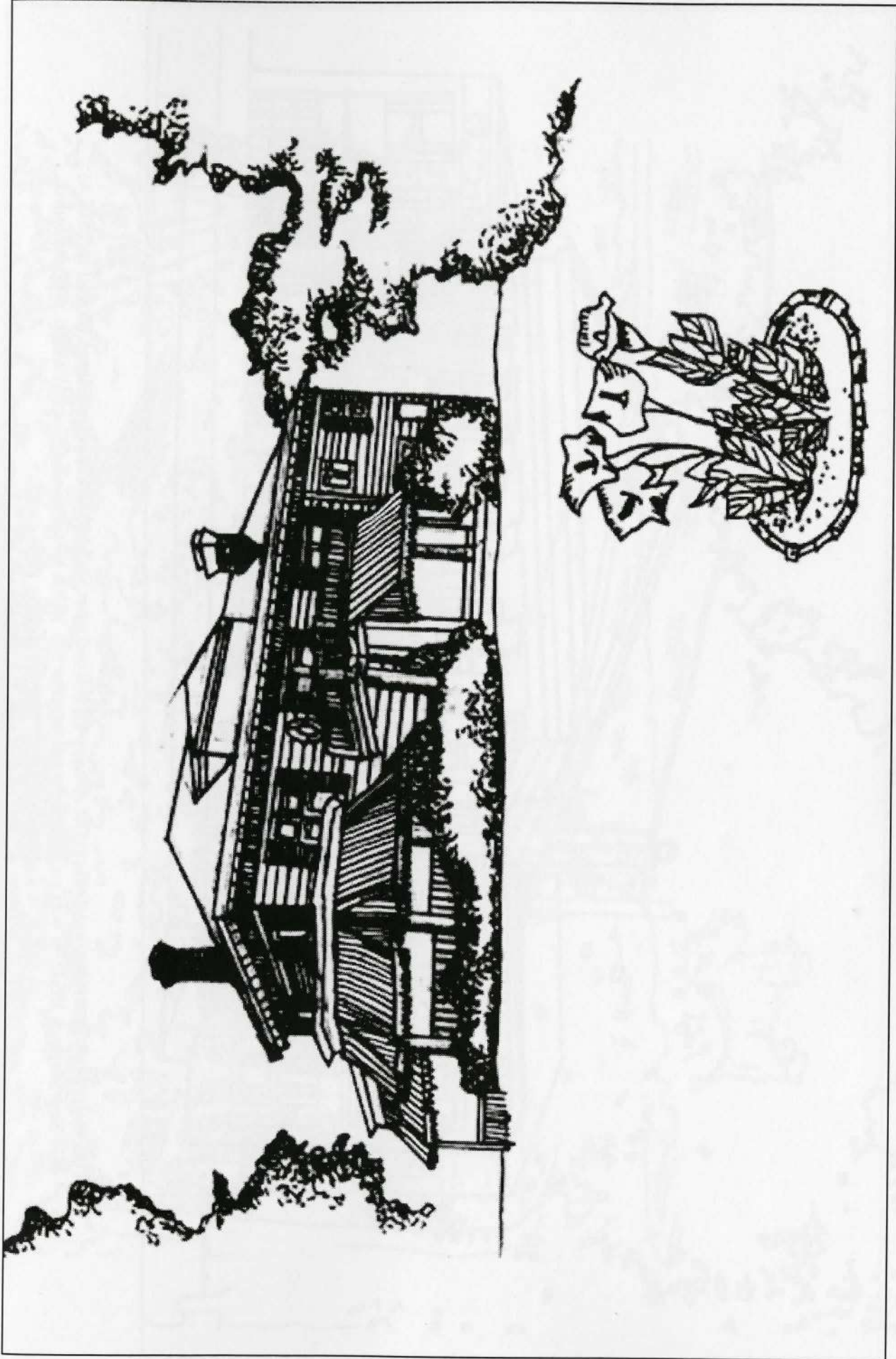


**Presbyterian** (1893) was a joint gift of Elliott and Margaret Shepard and contains the first all-electric action organ in the world and an exceptional coffered-wood ceiling over the nave; **St. Theresa's Roman Catholic**, dedicated on September 28, 1928, was built on the site of the original farmhouse where Briarcliff Farms began; **Congregational Sons of Israel**, whose cornerstone was laid in 1959, and whose buildings were renovated and greatly expanded in 1989-1991, has a history that extends back to the The Sons of Israel of Ossining in 1891; **Faith Lutheran Brethren** held their first service in October of 1967 and now includes a Christ-centered nursery school, The Little School, which serves the entire community.



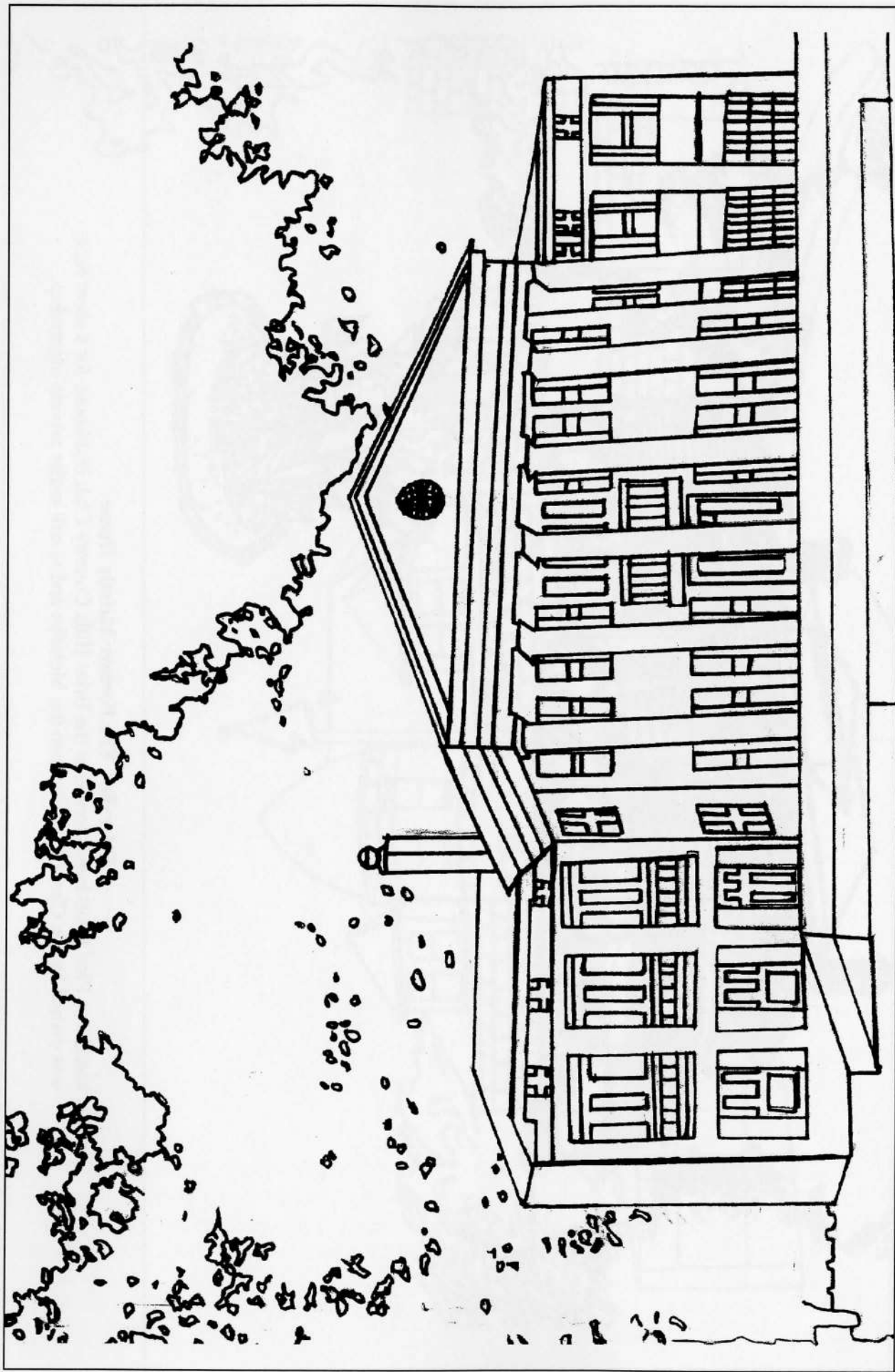
**The Law Mansion**

The Law Manor House, a large stone mansion with an entrance on Scarborough Road and an exit through All Saints Church property, later became a dormitory for the King's College and is now privately owned.



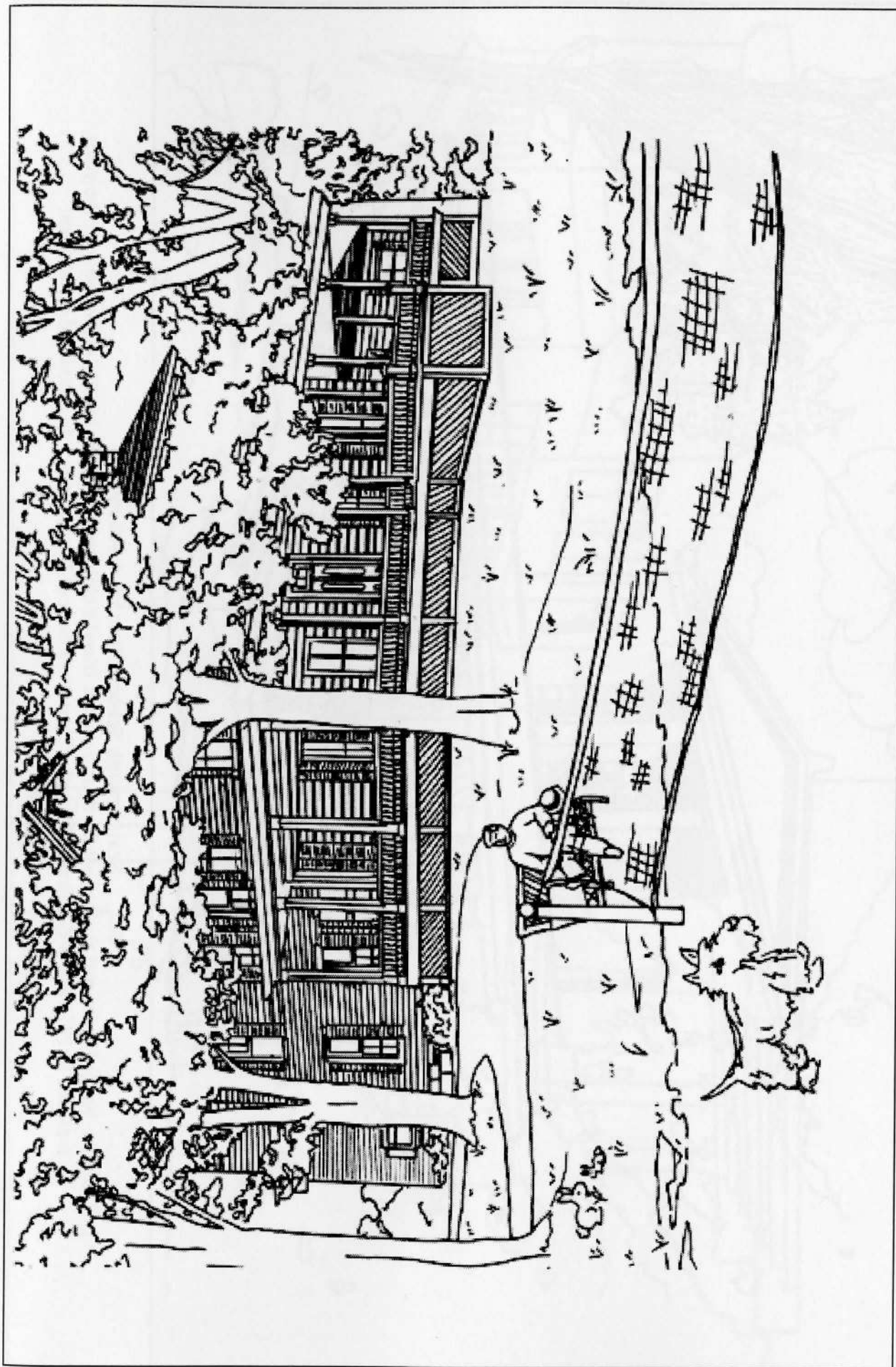
**Elderslie - The Former Melady Home**

This handsome Pine Road home served as the Briar Hills Country Club clubhouse for a short time, was owned by the Christie family, then the Meladys and is still under private ownership.



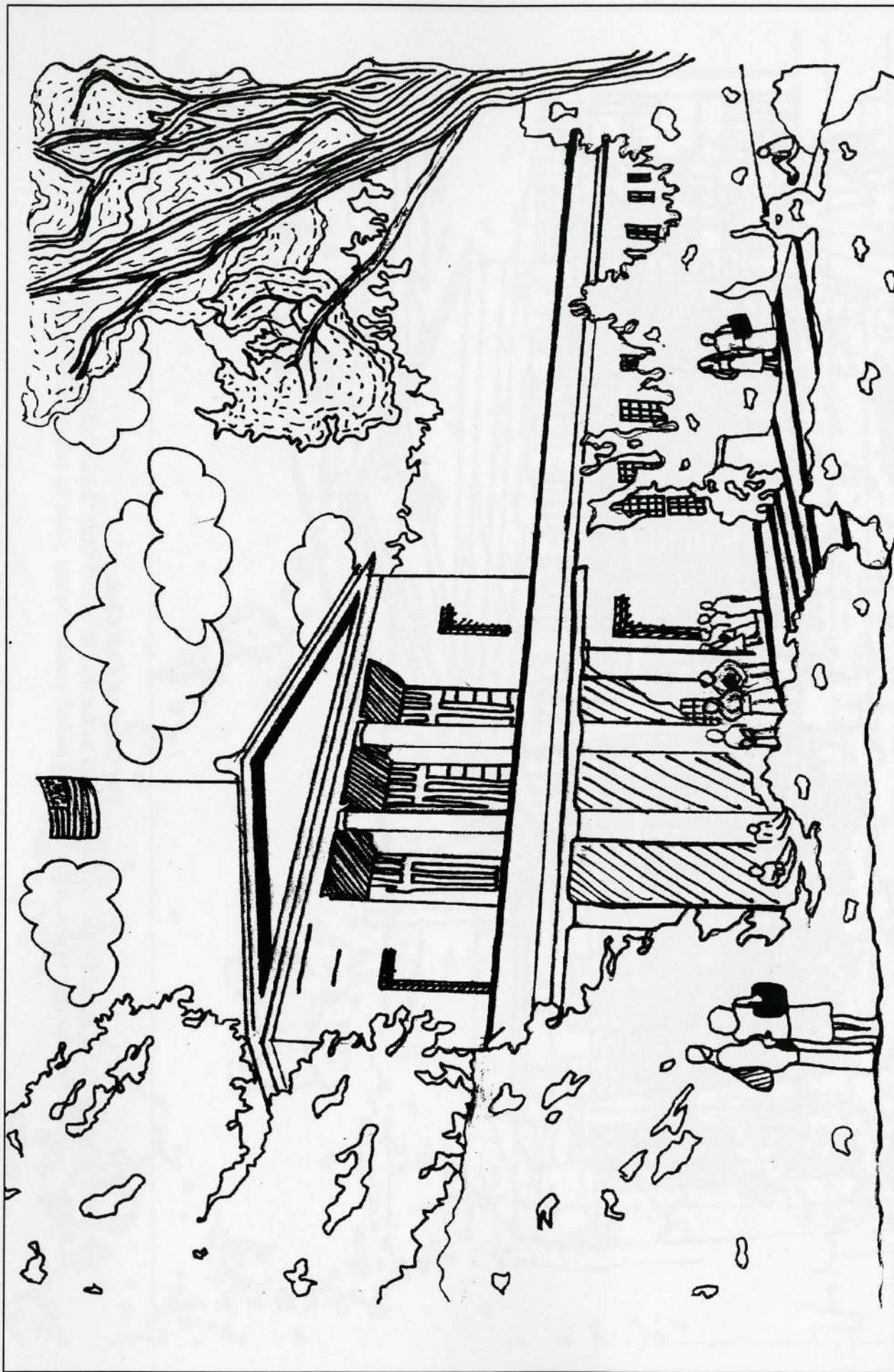
### Ashridge

This stately home originally stood on the Albany Post Road near St. Mary's Church and was moved in 1862 to 508 Scarborough Road. It was substantially enlarged in the 1930s by Giles and Flora Whiting, who included President Herbert Hoover among their guests.



### The Original Golf Club

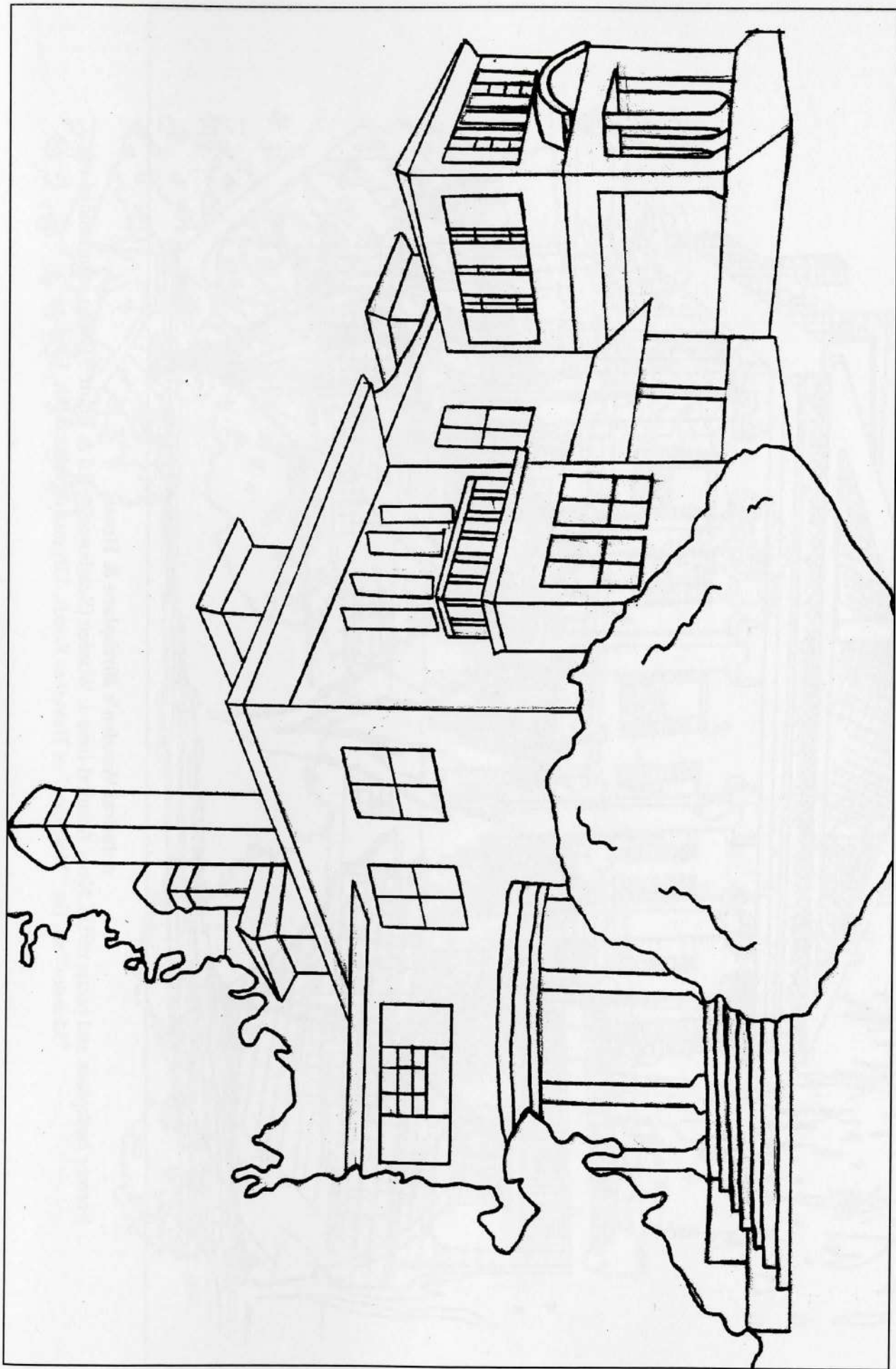
Part of the home at Two Central Drive originally served as the first Briarcliff Golf "Links" clubhouse and was later expanded. It was first thought to date from 1790, but milled wooden beams place its construction in the 1840s.



**Scarborough School/Clear View School**

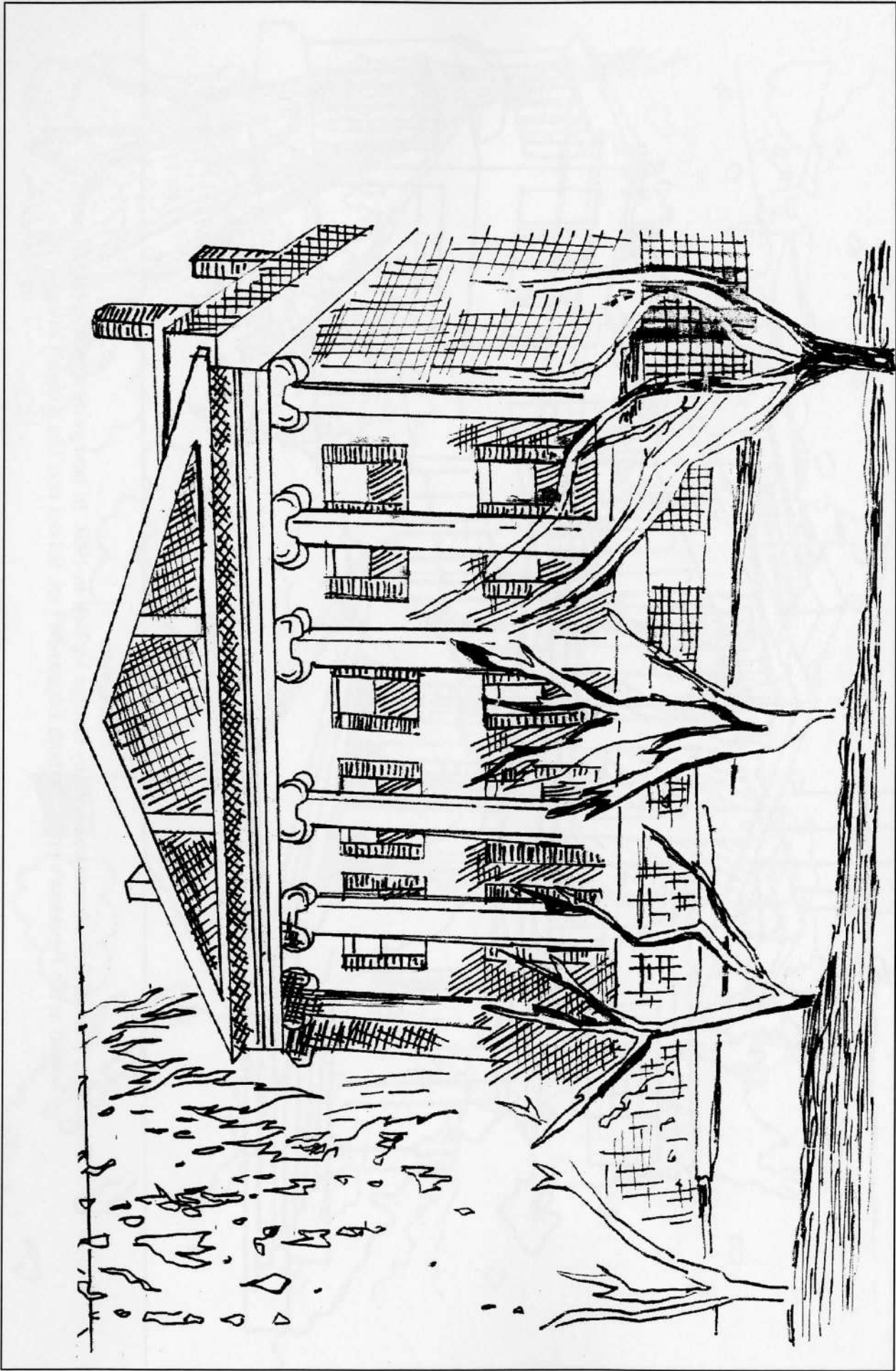
In 1913, the Vanderlips started this school for their own and friend's children. Although greatly expanded over the years, it closed in 1978 and was taken over by the Clear View School for children with emotional difficulties.





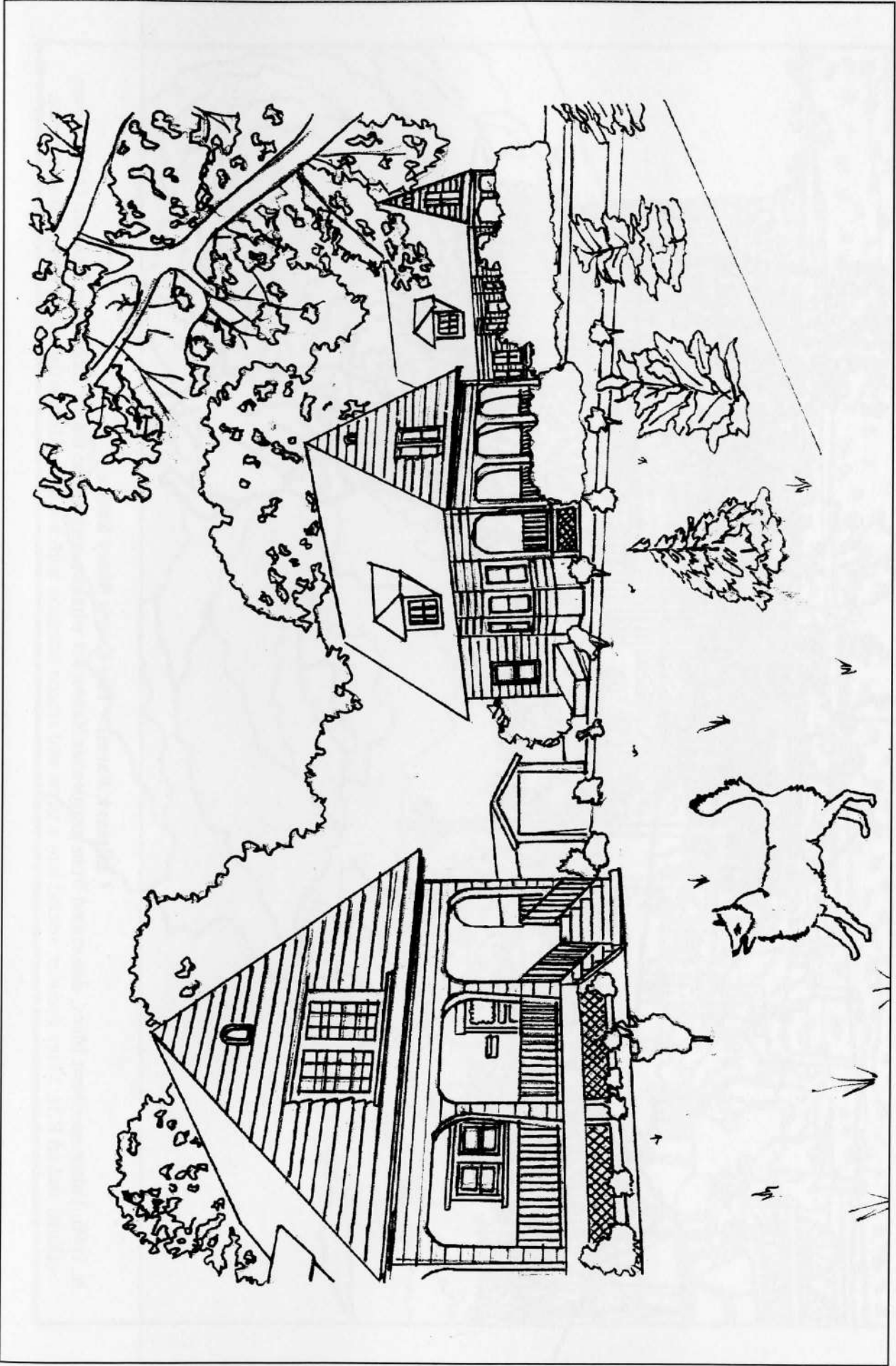
**Braeview**

This stately Central Drive home was built by George McNeir in 1908. In later years, it was enlarged and served as the President's home for both Edgewood Park School and The King's College.



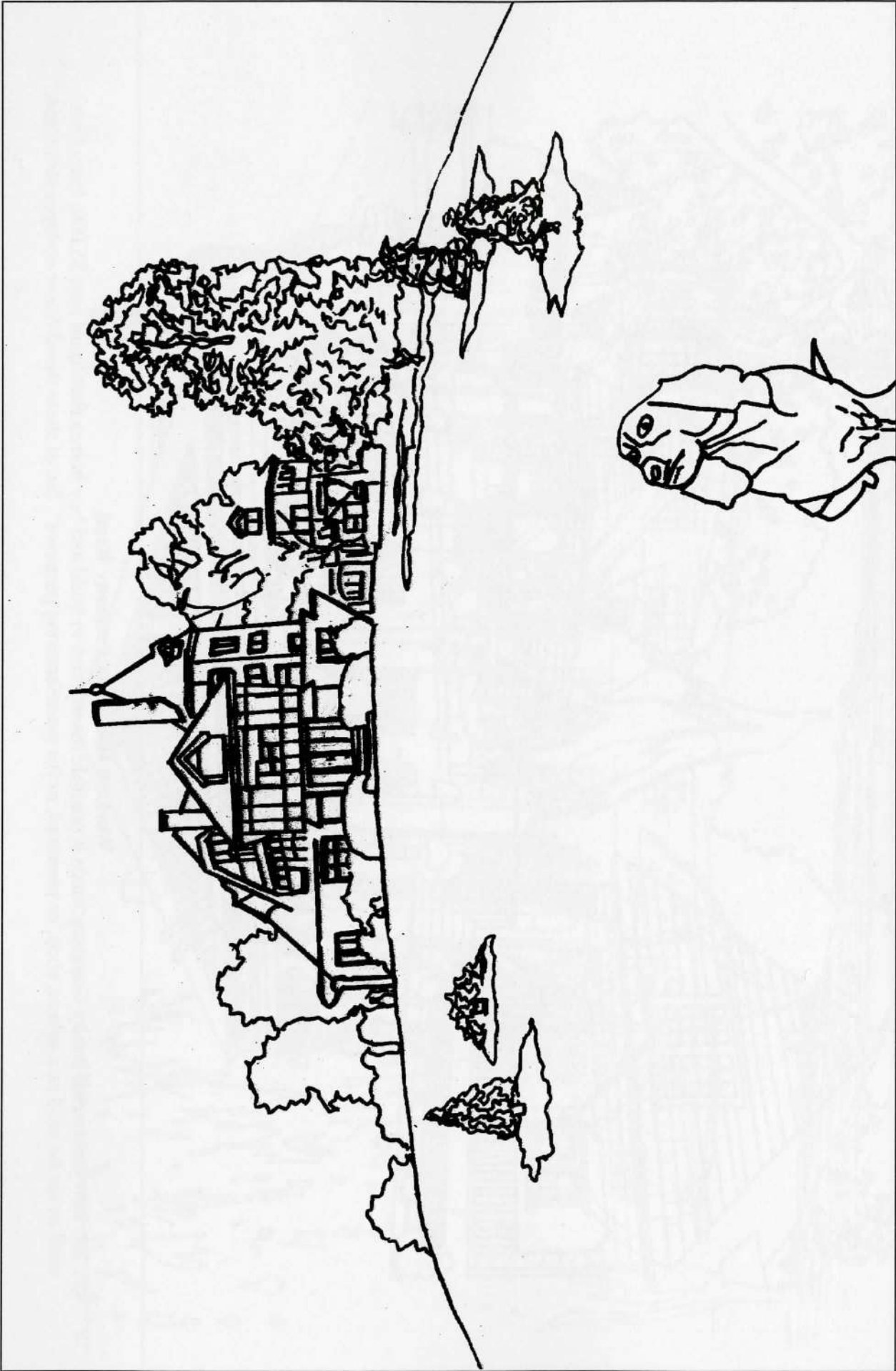
**Admiral Worden's Birthplace & Home**

Former birthplace and home of US Navy Admiral John J. Worden (Scarborough Rd & Route 9), who commanded the "Monitor" vs. the "Merrimac" at Hampton Roads, Virginia on March 9th, 1862.



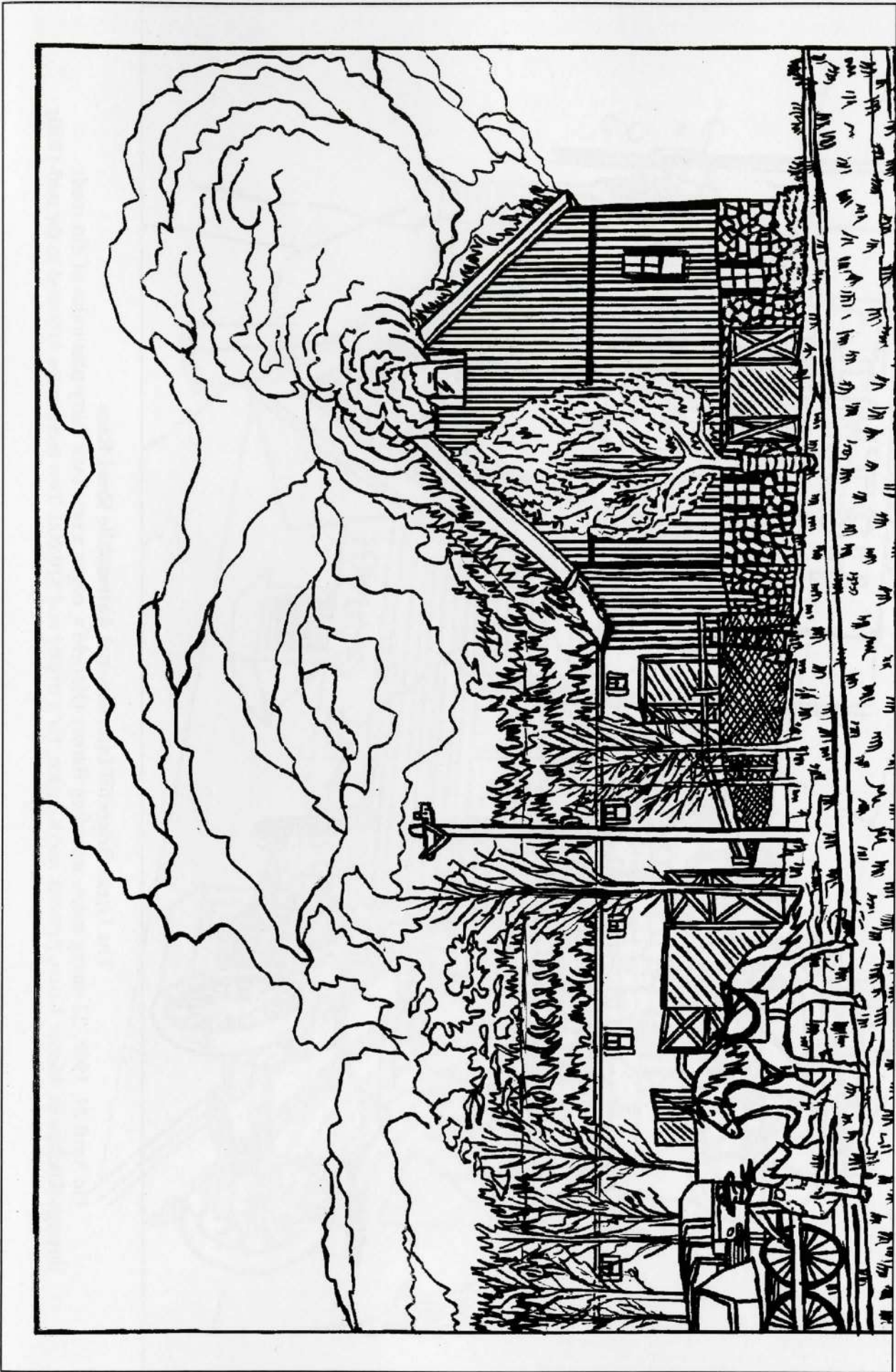
**Workers Homes on Dalmeny Road**

Mr. Law's Briarcliff Realty Company made it possible for workers to build and buy homes that "must cost \$5,000, but which shall never be used as a saloon, shop, or tenement, or for manufacturing purposes". Six of these wood-frame cottages still stand.



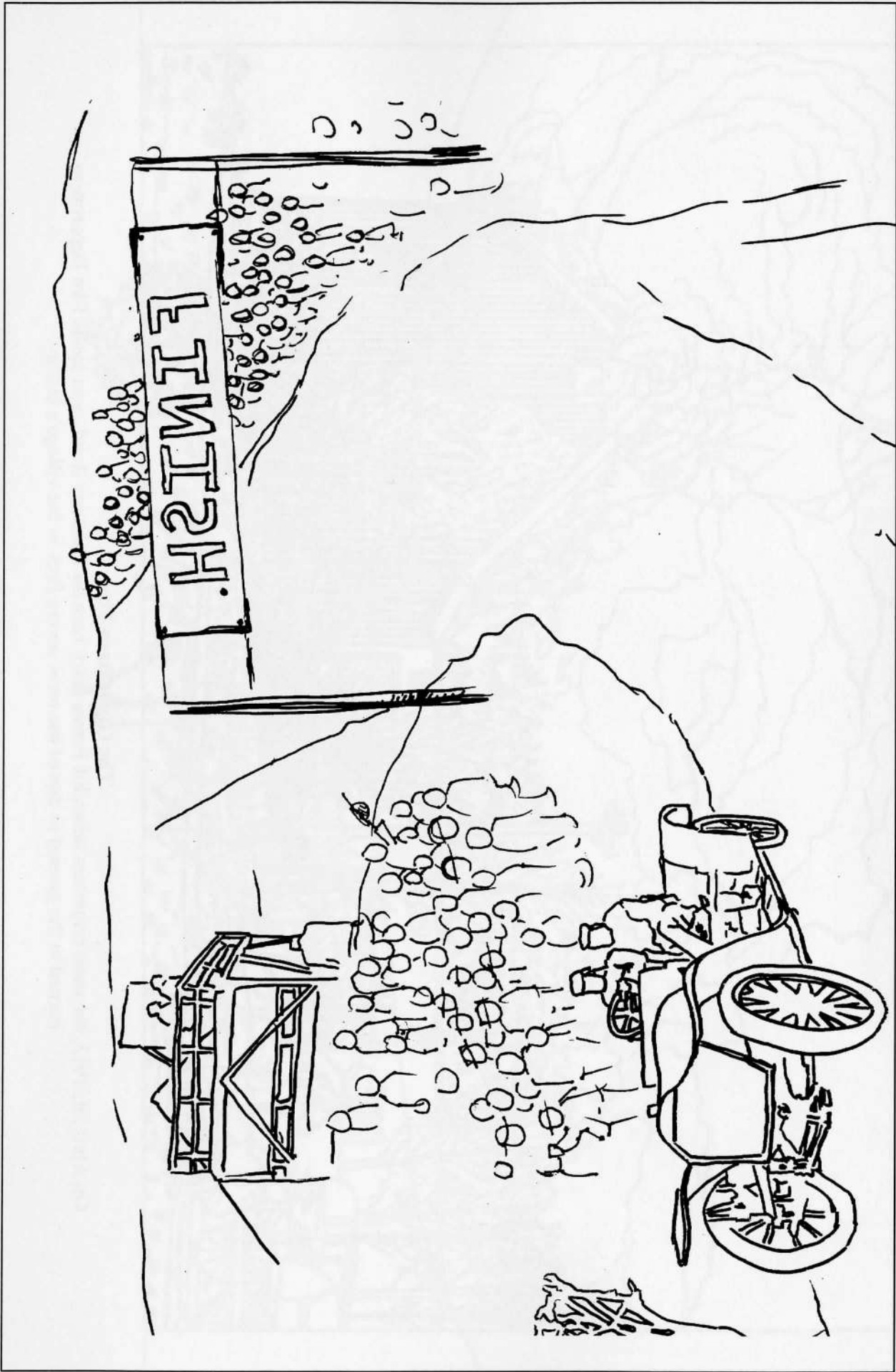
**Chilmark Farms - The Everit Macy Estate**

In 1896, Valentine Everit Macy, descended from prosperous Nantucket whalers, and whose family included a Standard Oil Company official and an R.H. Macy founder, settled into a stone and stucco mansion with his wife Edith at the top of their 300-acre estate.



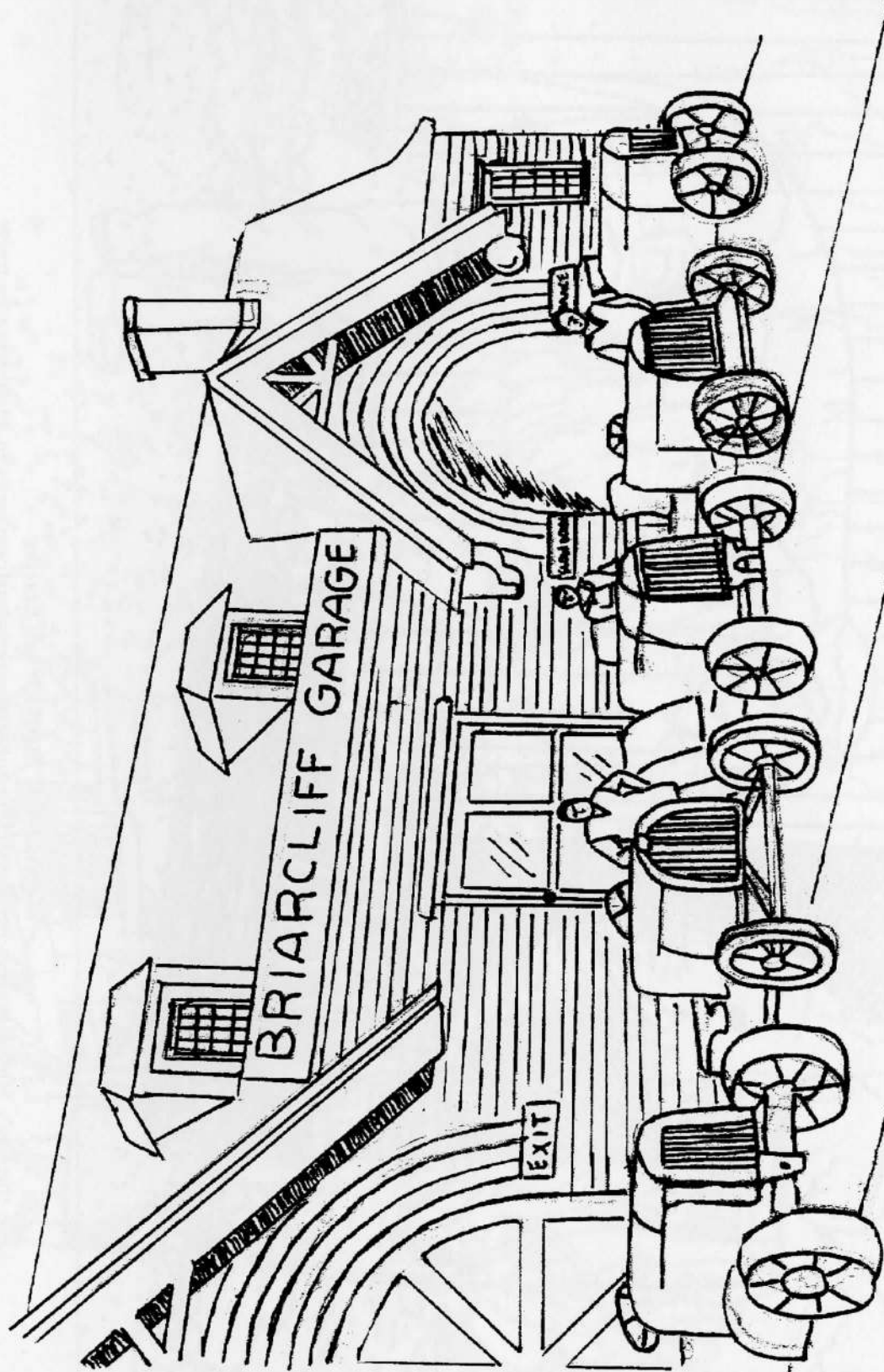
### The Great Barn Fire

On April 28, 1913, the most important Briarcliff Farms dairy barn on Dalmeny Road, next to the Fire Department, burned to the ground in one of the most severe fires in the village's history.



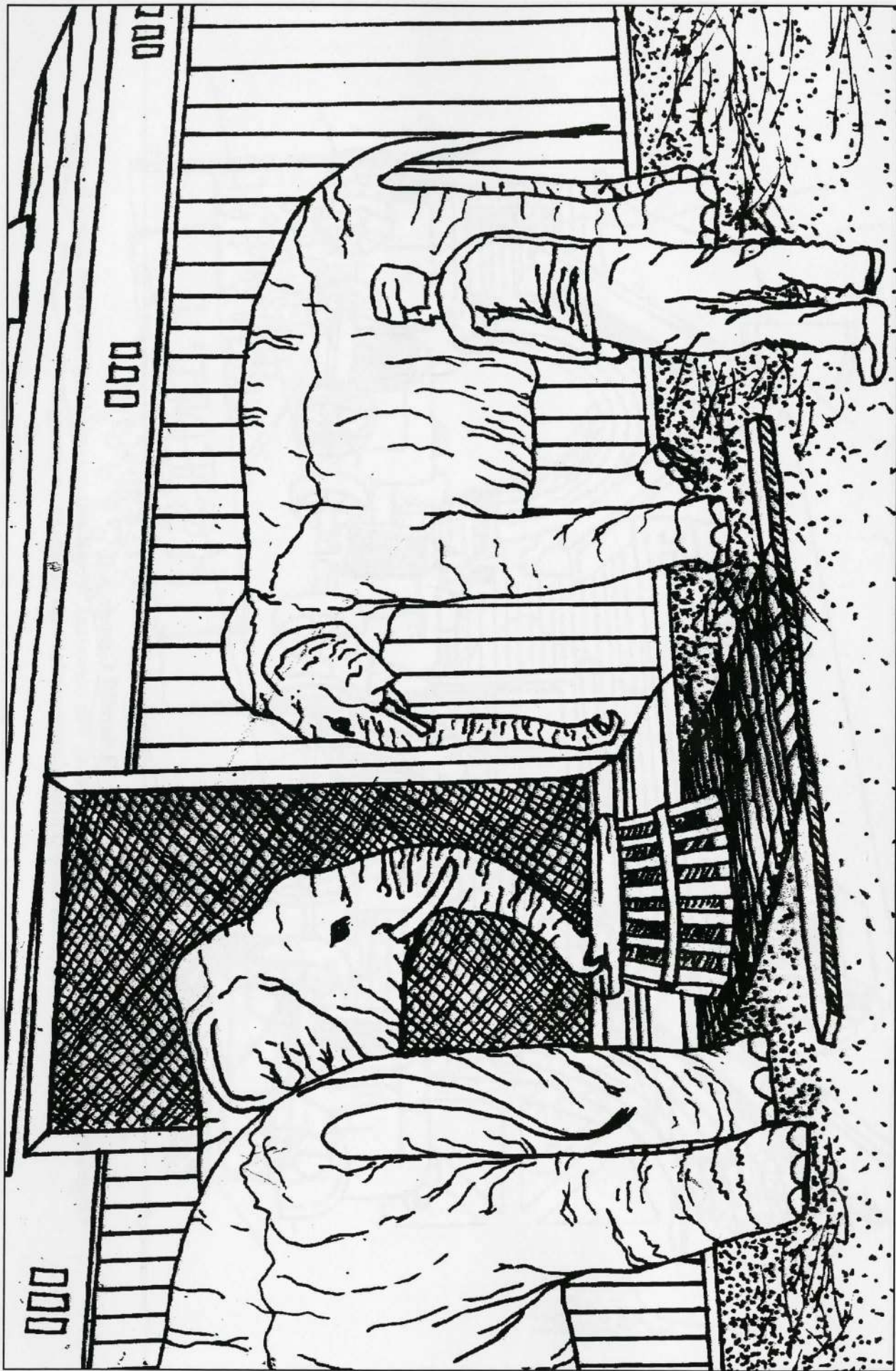
**The Great Briarcliff International Automobile Road Race**

On April 24, 1908, 22 racing autos, including Barney Oldfield's, began a race over thirty-plus miles of dirt roads through Kitchawan, Mount Kisco, Armonk and Kensico, for a trophy and \$10,000. Two more races followed in the mid-1930s.



### Briarcliff Garage

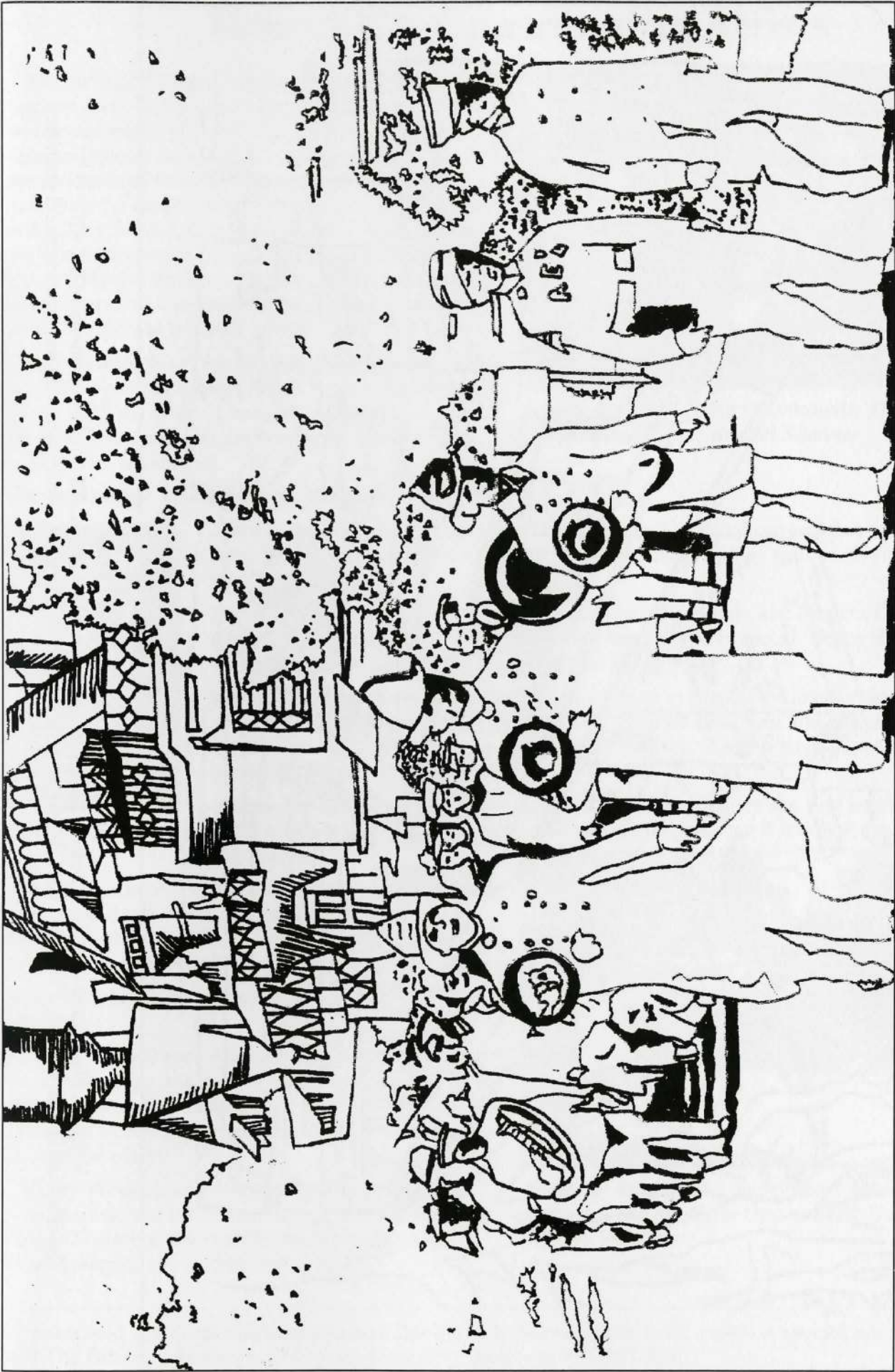
Originally the Briarcliff Lodge stables, this building was converted, rebuilt and expanded in 1909, when guests began to prefer mass-produced automobiles over horse-drawn carriages.



### Elephants at the Railroad Station

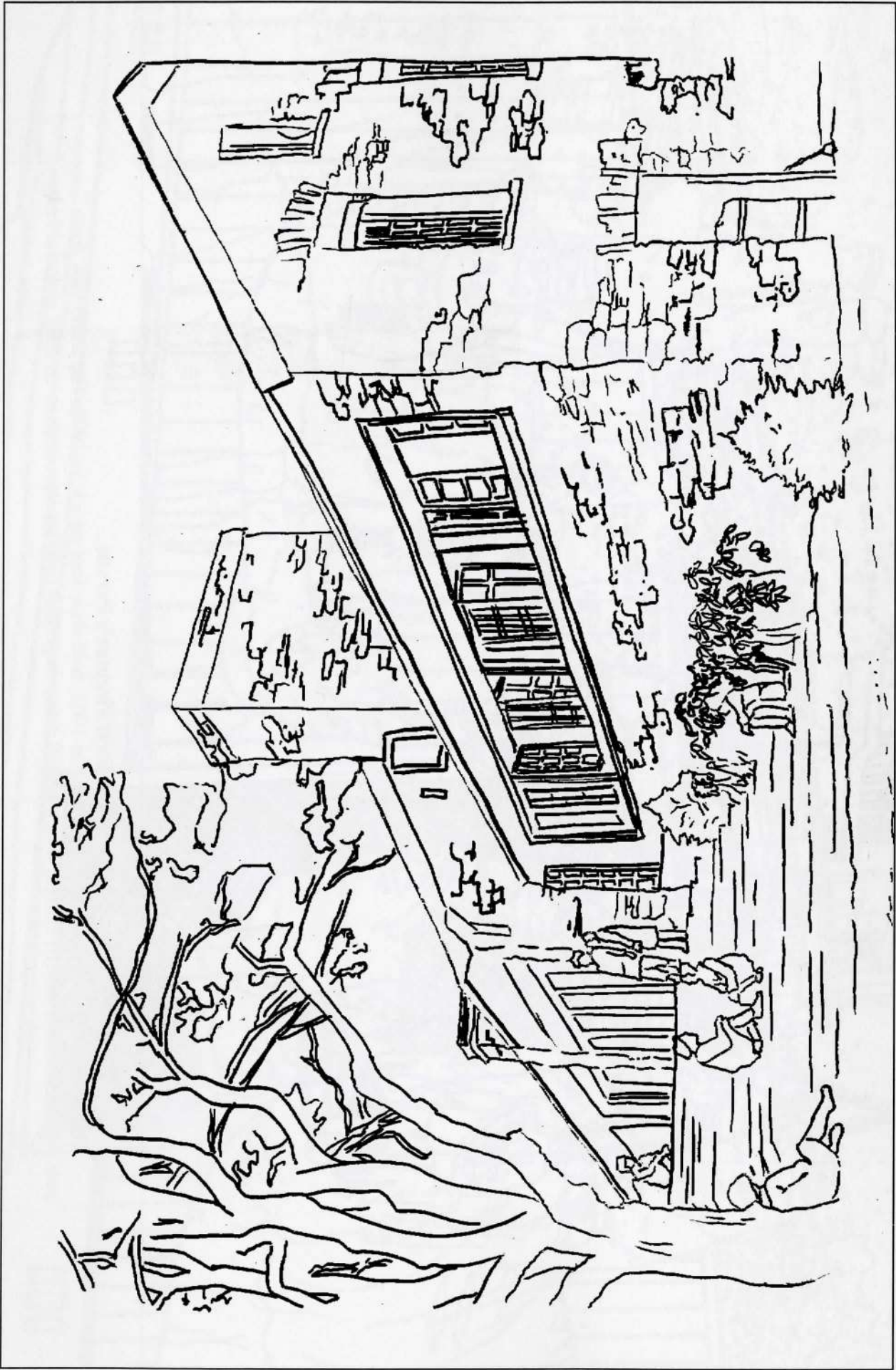
In the early 50s, Ringling Brothers elephants enroute to performances in Manhattan by train from their off-season home in Somers (P.T. Barnum's birthplace) would stop in Briarcliff to rest and refresh.





### The First Fireman's Parade

The Briarcliff Fire Department, organized in 1903, held their first parade in 1908. The route took them past the celebrated Briarcliff Lodge, which hosted many important community events in its long, colorful history.



**Great Hall at Camp Edith Macy**

V. Everit Macy gave the Girl Scouts 265 acres in 1925 to create Camp Edith Macy in memory of his wife. The first building on the site, The Great Hall (1926), held the fourth International Conference with delegates from 32 countries, at Juliette Low's urging.

# Briarcliff's Contributing Artists

The Briarcliff Manor-Scarborough Historical Society gives special and heartfelt thanks to the wonderful artists who gave so generously of their time and talents to create this coloring book. All are residents of Briarcliff Manor or Scarborough and, with the exception of Ms. Kilman, who studies at Hackley School, attended Briarcliff High School while working on the book. We are also deeply indebted to the student's teacher, Roxanne Ritacco, who supervised the drawings and coordinated the overall project at the high school.

**Lauren Goldich**— A senior who plans to study both art and English in college, she is the Co-President of the BHS Art Club. Lauren is a life-long Briarcliff resident who grew up with art— her Mom was also an art student.

**Nuvia Hassan**— 2005 graduate, now studying at Swarthmore College.



*Becca Kilman*

**Marc Iuliano**— A 2005 Graduate now attending Siena College in Albany studying business, he plans to keep art as a hobby as he has all his life, as well as playing guitar and practicing lacrosse.

**Becca Kilman**— A junior at Hackley, President of her class and Student Coordinator for the school's Community Service Program, she also plays soccer. Becca feels art, particularly watercolors, will always be important in her life.

**Katie Ottomanelli**— A senior who plans a career in graphic or interior design, she attended Pratt Institute in summer of 2005, takes art classes in and out of school and is the Co-President of The National Art Honor Society. Katie plans to attend a college strong in the arts in the fall of 2006.

**Calina Prudente**— A senior, she has been studying art since she first learned to draw and plans a career in architecture, which fascinates her because it involves the design of living spaces.

**Rachel Sommer**— A senior who favors English along with art and is a varsity swimmer, she is also Co-President of the BHS Art Club. Rachel plans a liberal arts college education to see what else is out there.

**Lisa Vastola**— 2005 graduate, now studying at Harvard.

**Lianna Weissblum**— A senior, she is especially interested in biology and history, is the sports editor of the school newspaper, Treasurer of the BHS Art Club and President of SADD. Lianna plans to explore a career in medical ethics.

**Tiffany Wen**— A senior with a penchant for math and Spanish, she is Co-President of the National Art Honor Society and a varsity tennis player. Among other colleges, she is considering USC.



*Lauren Goldich; Katie Ottomanelli; Tiffany Wen; Lianna Weissblum; Rachel Sommer*



*Roxanne Ritacco, Art Supervisor; Marc Iuliano; Lauren Goldich; Katie Ottomanelli; Rachel Sommer; Tiffany Wen*

If you would like more information about this book, or to order additional copies at special prices, please call The Briarcliff Manor/Scarborough Historical Society at 914-941-4393.

